



Product
Catalog

2017

ThermoFisher
SCIENTIFIC

	Page
Introduction	5
Available assays	6
Overview of instruments and assays	7
Allergy and asthma	
ImmunoCAP® Total IgE	8
ImmunoCAP® Total IgE Low Range	9
ImmunoCAP® Specific IgE	10
ImmunoCAP® Phadiatop / Phadiatop Infant	11
ImmunoCAP® Specific IgG	12
ImmunoCAP® Specific IgG4	13
ImmunoCAP® Specific IgA	14
ImmunoCAP® ECP	15
ImmunoCAP® Tryptase	16
ImmunoCAP® Allergen components	17
ImmunoCAP® Allergens	19
ImmunoCAP® Antigens	33
ImmunoCAP® Rapid	34
ImmunoCAP® ISAC	35
Autoimmunity	
EliA™	38
ImmunoCAP® Thyroglobulin IgG / Thyroid Peroxidase IgG	43
ImmunoCAP® Gliadin IgA/IgG	44
Phadia® Laboratory Systems	
Phadia® 5000	45
System reagents, Accessories and Software	
Phadia® 2500	46
System reagents, Accessories and Software	
Phadia® 1000	47
System reagents, Accessories and Software	
Phadia® 250	48
System reagents, Accessories and Software	
Phadia® 100	49
System reagents, Accessories and Software	
Quality Club™	50
Specifications	51
ImmunoCAP® and EliA™	

About us

ImmunoDiagnostics – the global leader in allergy and autoimmunity diagnostics.

As the ImmunoDiagnostics experts within Thermo Fisher Scientific, we work to significantly improve the management of allergy, asthma and autoimmune disease. We do this by providing healthcare professionals with diagnostic technologies and clinical expertise. This results in better healthcare and quality of life for millions of patients and their families. For more information, please visit www.thermoscientific.com/phadia.

Thermo Fisher Scientific Inc. is the world leader in serving science, with revenues of \$18 billion and approximately 57,000 employees in 50 countries. Our mission is to enable our customers to make the world healthier, cleaner and safer. We help our customers accelerate life sciences research, solve complex analytical challenges, improve patient diagnostics and increase laboratory productivity. Through our premier brands – Thermo Scientific, Applied Biosystems, Invitrogen, Fisher Scientific and Unity Lab Services – we offer an unmatched combination of innovative technologies, purchasing convenience and comprehensive support. For more information, please visit www.thermofisher.com.



Immunoglobulin E

Assay categories	Relevant disease areas
Phadiatop, Phadiatop Infant	Allergy, atopy
Total IgE	Allergy
Specific IgE	Allergy, allergen sensitization, Molecular Allergology

Immunoglobulin A

Assay categories	Relevant disease areas
Specific IgA	Allergy (food-sensitive enteropathies)
Gliadin IgA	Celiac Disease

Immunoglobulin G

Assay categories	Relevant disease areas
Specific IgG	Allergy, gastrointestinal disorders, immunotherapy, lung disease, autoimmunity
Specific IgG4	Allergy, immunotherapy
Gliadin IgG	Celiac Disease
Thyroid Peroxidase IgG	Thyroid autoimmunity
Thyroglobulin IgG	Thyroid autoimmunity

Cellular Markers (Asthma and Inflammation)

Assay categories	Relevant disease areas
ECP	Asthma
Tryptase	Allergy, anaphylaxis, hematological disorders, immunotherapy

Autoimmunity

EliA

Assay categories	Relevant disease areas
CCP, RF	Rheumatoid arthritis
ANA / ENA, dsDNA, ssDNA	Connective tissue diseases
ANCA, GBM	Vasculitis, Goodpasture syndrome
Cardiolipin, β 2GPI	Antiphospholipid syndrome
tTG, Gliadin, Gliadin peptides	Celiac disease
Calprotectin, ASCA	Inflammatory bowel diseases
anti-TPO, anti-TG	Autoimmune thyroid diseases
anti-TSH-R	Autoimmune thyroid diseases
M2	Primary liver cirrhosis
anti-IgA	Immunodeficiency
Intrinsic Factor, Parietal Cell	Pernicious anemia

ImmunoCAP Rapid

Assay category	Relevant disease area
Specific IgE	Allergy, allergen sensitization

ImmunoCAP ISAC

Assay category	Relevant disease area
Specific IgE	Allergy, Molecular Allergology

Overview of instruments and assays

	Phadia 100	Phadia 250	Phadia 1000	Phadia 2500	Phadia 5000
Allergy and Asthma					
ImmunoCAP Total IgE	✓	✓	✓	✓	✓
ImmunoCAP Total IgE Low Range	✓	✓	✓	✓	✓
ImmunoCAP Specific IgE	✓	✓	✓	✓	✓
ImmunoCAP Phadiatop/ Phadiatop Infant	✓	✓	✓	✓	✓
ImmunoCAP Specific IgA	✓	-	-	-	-
ImmunoCAP Specific IgG/IgG4	✓	✓	✓	✓	✓
ImmunoCAP ECP	✓	✓	✓	✓	✓
ImmunoCAP Tryptase	✓	✓	✓	-	-
Autoimmunity					
EliA					
CCP, RF	✓	✓	-	✓	✓
ANA / ENA, dsDNA, ssDNA	✓*	✓	-	✓	✓
ANCA, GBM	✓	✓	-	✓	✓
Cardiolipin, β 2GPI	✓	✓	-	✓	✓
tTG, Gliadin, Gliadin peptides	✓	✓	-	✓	✓
Calprotectin, ASCA	✓**	✓	-	✓	✓
anti-TPO, anti-TG	-	✓	-	✓	✓
anti-TSH-R	-	✓	-	-	-
M2	✓	✓	-	✓	✓
anti-IgA	✓	✓	-	✓	✓
Intrinsic Factor, Parietal Cell	-	✓	-	✓	✓
ImmunoCAP					
anti-Gliadin	✓	-	-	-	-
TPO, TG	✓	✓	-	✓	✓

*except EliA RNA Pol III

**except EliA Calprotectin 2



Total IgE**Total IgE Low Range**

ImmunoCAP Total IgE measures IgE in human serum or plasma in concentrations between 2 to 5000 kU/l. ImmunoCAP Total IgE Low Range measures IgE in human serum or plasma in concentrations between 0.1 to 100 kU/l stimulation. IgE antibodies appear as a result of sensitization to allergens and measurement of circulating total IgE provides an aid in the clinical diagnosis of IgE-mediated allergic disorders.

**Reagents Phadia 5000 / Phadia 2500 / Phadia 1000 / Phadia 250**

Product	Size	Art. No.
ImmunoCAP Total IgE Conjugate 100	6 x 100	10-9319-01
ImmunoCAP Total IgE Conjugate 400	6 x 400	10-9480-01
ImmunoCAP Total IgE Calibrator Strip	5 x 1 curve	10-9387-01
ImmunoCAP Total IgE Curve Control Strip	5 x 3 pairs	10-9325-01
ImmunoCAP Total IgE Anti-IgE	16	14-4509-01
ImmunoCAP IgE/ECP/Tryptase Sample Diluent	50 ml	10-9360-01
System reagents, see page 45-48		
Control		
ImmunoCAP Total IgE Control LMH	3 x 2 x 4	10-9447-01

Reagents Phadia 100

Product	Size	Art. No.
ImmunoCAP Total IgE (Conjugate, Curve Control)	96, 4CC	10-9517-01
ImmunoCAP Total IgE Calibrators	1 curve	10-9252-01
ImmunoCAP Total IgE Curve Controls	3 pairs	10-9257-01
ImmunoCAP Total IgE Anti-IgE	16	14-4509-01
ImmunoCAP IgE/ECP/Tryptase Sample Diluent	6 x 3.0 ml	10-9256-01
System reagents, see page 49		
Control		
ImmunoCAP Total IgE Control LMH	3 x 2 x 4	10-9447-01

Reagents Phadia 5000 / Phadia 2500

Product	Size	Art. No.
ImmunoCAP Total IgE Low Range	3 x 16	14-4497-35
ImmunoCAP Specific IgE Conjugate 100	6 x 100	10-9316-01
ImmunoCAP Specific IgE Conjugate 400	6 x 400	10-9310-01
ImmunoCAP Specific IgE Calibrator Strip	5 x 1 curve	10-9459-01
ImmunoCAP Specific IgE Curve Control Strip	5 x 3 pairs	10-9312-01
ImmunoCAP IgE/ECP/Tryptase Sample Diluent	50 ml	10-9360-01
ImmunoCAP Specific IgE Anti-IgE	16	14-4417-01
System reagents, see page 45-46		

Reagents Phadia 1000 / Phadia 250

Product	Size	Art. No.
ImmunoCAP Total IgE Low Range	3 x 16	14-4497-35
ImmunoCAP Specific IgE Conjugate 100	6 x 100	10-9316-01
ImmunoCAP Specific IgE Conjugate 400	6 x 400	10-9310-01
ImmunoCAP Specific IgE Calibrator Strip	5 x 1 curve	10-9459-01
ImmunoCAP Specific IgE Curve Control Strip	5 x 3 pairs	10-9312-01
ImmunoCAP IgE/ECP/Tryptase Sample Diluent	50 ml	10-9360-01
ImmunoCAP Specific IgE Anti-IgE	16	14-4417-01
System reagents, see page 47-48		

Reagents Phadia 100

Product	Size	Art. No.
ImmunoCAP Total IgE Low Range	3 x 16	14-4497-35
ImmunoCAP Specific IgE (Conjugate, Curve Controls)	96, 2 pairs CC	10-9462-01
ImmunoCAP Specific IgE Conjugate	6 x 96	10-9463-01
ImmunoCAP Specific IgE Calibrators	1 curve	10-9460-01
ImmunoCAP Specific IgE Curve Controls	3 pairs	10-9408-01
ImmunoCAP IgE/ECP/Tryptase Sample Diluent	6 x 3.0 ml	10-9256-01
ImmunoCAP Specific IgE Anti-IgE	16	14-4417-01
System reagents, see page 49		

Specific IgE

ImmunoCAP Specific IgE provides an objective measurement of the circulating IgE antibodies and the sensitization to a specific allergen. Specific IgE antibodies appear as a result of exposure and following sensitization to an allergen. ImmunoCAP Specific IgE measure IgE antibodies to specific allergens in human serum or plasma and allows quantitative measurements of a wide range of individual allergens and allergen components. Over 650 different allergens are available for determinations.



Reagents Phadia 5000 / Phadia 2500

Product	Size	Art. No.
ImmunoCAP Specific IgE Conjugate 400	6 x 400	10-9310-01
ImmunoCAP Specific IgE Calibrator Strip	5 x 1 curve	10-9459-01
ImmunoCAP Specific IgE Curve Control Strip	5 x 3 pairs	10-9312-01
ImmunoCAP IgE/ECP/Tryptase Sample Diluent	50 ml	10-9360-01
ImmunoCAP Specific IgE Anti-IgE	16	14-4417-01
System reagents, see page 45-46		
Controls		
ImmunoCAP Specific IgE Negative Control	6 x 4	10-9445-01
ImmunoCAP Specific IgE Control L	6 x 4	10-9528-01
ImmunoCAP Specific IgE Control M	6 x 4	10-9529-01
ImmunoCAP Specific IgE Control H	6 x 4	10-9530-01

Allergens

ImmunoCAP Allergens, see pages 19-32

Reagents Phadia 1000 / Phadia 250

Product	Size	Art. No.
ImmunoCAP Specific IgE Conjugate 100	6 x 100	10-9316-01
ImmunoCAP Specific IgE Conjugate 400	6 x 400	10-9310-01
ImmunoCAP Specific IgE Calibrator Strip	5 x 1 curve	10-9459-01
ImmunoCAP Specific IgE Curve Control Strip	5 x 3 pairs	10-9312-01
ImmunoCAP IgE/ECP/Tryptase Sample Diluent	50 ml	10-9360-01
ImmunoCAP Specific IgE Anti-IgE	16	14-4417-01
System reagents, see page 47-48		
Controls		
ImmunoCAP Specific IgE Negative Control	6 x 4	10-9445-01
ImmunoCAP Specific IgE Control L	6 x 4	10-9528-01
ImmunoCAP Specific IgE Control M	6 x 4	10-9529-01
ImmunoCAP Specific IgE Control H	6 x 4	10-9530-01

Allergens

ImmunoCAP Allergens, see pages 19-32

Reagents Phadia 100

Product	Size	Art. No.
ImmunoCAP Specific IgE (Conjugate, Curve Controls)	96, 2 pairs CC	10-9462-01
ImmunoCAP Specific IgE Conjugate	6 x 96	10-9463-01
ImmunoCAP Specific IgE Calibrators	1 curve	10-9460-01
ImmunoCAP Specific IgE Curve Controls	3 pairs	10-9408-01
ImmunoCAP IgE/ECP/Tryptase Sample Diluent	6 x 3.0 ml	10-9256-01
ImmunoCAP Specific IgE Anti-IgE	16	14-4417-01
System reagents, see page 49		
Controls		
ImmunoCAP Specific IgE Negative Control	6 x 4	10-9445-01
ImmunoCAP Specific IgE Control L	6 x 4	10-9528-01
ImmunoCAP Specific IgE Control M	6 x 4	10-9529-01
ImmunoCAP Specific IgE Control H	6 x 4	10-9530-01

Allergens

ImmunoCAP Allergens, see pages 19-32

Phadiatop Phadiatop Infant

Phadiatop and Phadiatop Infant are initial, qualitative screening tests useful for identifying patients with a high likelihood of an allergic disease (so called atopic individuals). Phadiatop and Phadiatop Infant utilize balanced mixtures of relevant allergens, often implicated in causing allergic diseases in adults and in young children, respectively.

Reference: Williams PB, et al. Ann Allergy Asthma Immunol. 2001;86:196-202.



Reagents Phadia 5000 / Phadia 2500

Product	Size	Art. No.	Barcode
ImmunoCAP Phadiatop	3 x 16	14-4405-35	610
ImmunoCAP Phadiatop Infant	3 x 16	14-4510-35	BGZ
ImmunoCAP Specific IgE Conjugate 400	6 x 400	10-9310-01	
ImmunoCAP Specific IgE Calibrator Strip	5 x 1 curve	10-9459-01	
ImmunoCAP Specific IgE Curve Control Strip	5 x 3 pairs	10-9312-01	
ImmunoCAP IgE/ECP/Tryptase Sample Diluent	50 ml	10-9360-01	
ImmunoCAP Specific IgE Anti-IgE	16	14-4417-01	
System reagents, see page 45-46			

Reagents Phadia 1000 / Phadia 250

Product	Size	Art. No.	Barcode
ImmunoCAP Phadiatop	3 x 16	14-4405-35	610
ImmunoCAP Phadiatop Infant	3 x 16	14-4510-35	BGZ
ImmunoCAP Specific IgE Conjugate 100	6 x 100	10-9316-01	
ImmunoCAP Specific IgE Conjugate 400	6 x 400	10-9310-01	
ImmunoCAP Specific IgE Calibrator Strip	5 x 1 curve	10-9459-01	
ImmunoCAP Specific IgE Curve Control Strip	5 x 3 pairs	10-9312-01	
ImmunoCAP IgE/ECP/Tryptase Sample Diluent	50 ml	10-9360-01	
ImmunoCAP Specific IgE Anti-IgE	16	14-4417-01	
System reagents, see page 47-48			

Reagents Phadia 100

Product	Size	Art. No.	Barcode
ImmunoCAP Phadiatop	3 x 16	14-4405-35	610
ImmunoCAP Phadiatop Infant	3 x 16	14-4510-35	BGZ
ImmunoCAP Specific IgE (Conjugate, Curve Controls)	96, 2 pairs CC	10-9462-01	
ImmunoCAP Specific IgE Conjugate	6 x 96	10-9463-01	
ImmunoCAP Specific IgE Calibrators	1 curve	10-9460-01	
ImmunoCAP Specific IgE Curve Controls	3 pairs	10-9408-01	
ImmunoCAP IgE/ECP/Tryptase Sample Diluent	6 x 3.0 ml	10-9256-01	
ImmunoCAP Specific IgE Anti-IgE	16	14-4417-01	
System reagents, see page 49			

Specific IgG

ImmunoCAP Specific IgG measures antigen-specific IgG antibodies in human serum and plasma. Measurements of specific IgG antibodies have been used in clinical studies of different allergic diseases, gastrointestinal disorders and in various lung diseases. Tests for specific IgG antibodies may be useful to investigate the immune response in patients exposed to antigens either through natural exposure or therapeutic interventions.



Reagents Phadia 5000 / Phadia 2500 / Phadia 1000 / Phadia 250

Product	Size	Art. No.
ImmunoCAP Specific IgG Conjugate 50	2 x 50	10-9318-01
ImmunoCAP Specific IgG Calibrator Strip	1 curve	10-9327-01
ImmunoCAP Specific IgG Curve Control Strip	3 pairs	10-9349-01
ImmunoCAP IgA/IgG Calibrator ImmunoCAP	16	14-4424-01
ImmunoCAP Specific IgA/IgG Sample Diluent	6 x 50 ml	10-9361-01
System reagents, see page 45-48		
Controls		
ImmunoCAP Specific IgG/IgG4 Control L	6 x 4	10-9473-01
ImmunoCAP Specific IgG/IgG4 i1 Control H	6 x 4	10-9475-01
ImmunoCAP Specific IgG m3 Control H	6 x 4	10-9500-01
Antigens/Allergens		
ImmunoCAP Antigens, see page 33		
ImmunoCAP Allergens, see page 19-32		

Reagents Phadia 100

Product	Size	Art. No.
ImmunoCAP Specific IgG Conjugate	2 x 48	10-9455-01
ImmunoCAP Specific IgG Calibrators	1 curve	10-9305-01
ImmunoCAP Specific IgG Curve Controls	3 pairs	10-9333-01
ImmunoCAP IgA/IgG Calibrator ImmunoCAP	16	14-4424-01
ImmunoCAP Specific IgA/IgG Sample Diluent	6 x 10 ml	10-9498-01
System reagents, see page 49		
Control		
ImmunoCAP Specific IgG/IgG4 Control L	6 x 4	10-9473-01
ImmunoCAP Specific IgG/IgG4 i1 Control H	6 x 4	10-9475-01
ImmunoCAP Specific IgG m3 Control H	6 x 4	10-9500-01
Antigens/Allergens		
ImmunoCAP Antigens, see page 33		
ImmunoCAP Allergens, see page 19-32		

Specific IgG4

ImmunoCAP Specific IgG4 measures antigen-specific IgG4 antibodies in human serum and plasma. Measurements of Specific IgG and/or Specific IgG4 antibodies have been used in clinical studies of many different allergic diseases including: asthma, rhinitis, urticaria, eczema and gastrointestinal disorders. Increased concentrations of specific IgG4 antibodies are typically observed in patients treated with allergen immunotherapy, including immunotherapy with inhalant aeroallergens and hymenoptera venoms, where IgG and IgG4 antibodies are biomarkers of antigen exposure.

Reference: Eifan AO, *et al.* *Curr Opin Allergy Clin Immunol.* 2011;11(6):586-93.

Ozdemir C, *et al.* *Clin Exp Allergy.* 2011;41(9):1226-34.



Reagents Phadia 5000 / Phadia 2500 / Phadia 1000 / Phadia 250

Product	Size	Art. No.
ImmunoCAP Specific IgG4 Conjugate 50	2 x 50	10-9481-01
ImmunoCAP Specific IgG4 Calibrator Strip	1 curve	10-9482-01
ImmunoCAP Specific IgG4 Curve Control Strip	3 pairs	10-9483-01
ImmunoCAP IgA/IgG Calibrator ImmunoCAP	16	14-4424-01
ImmunoCAP Specific IgA/IgG Sample Diluent System reagents, see page 45-48	6 x 50 ml	10-9361-01
Controls		
ImmunoCAP Specific IgG/IgG4 Control L	6 x 4	10-9473-01
ImmunoCAP Specific IgG/IgG4 i1 Control H	6 x 4	10-9475-01
Allergens		
ImmunoCAP Allergens, see page 19-32		

Reagents Phadia 100

Product	Size	Art. No.
ImmunoCAP Specific IgG4 Conjugate	48	10-9465-01
ImmunoCAP Specific IgG4 Calibrators	1 curve	10-9466-01
ImmunoCAP Specific IgG4 Curve Controls	3 pairs	10-9467-01
ImmunoCAP IgA/IgG Calibrator ImmunoCAP	16	14-4424-01
ImmunoCAP Specific IgA/IgG Sample Diluent System reagents, see page 49	6 x 10 ml	10-9498-01
Control		
ImmunoCAP Specific IgG/IgG4 Control L	6 x 4	10-9473-01
ImmunoCAP Specific IgG/IgG4 i1 Control H	6 x 4	10-9475-01
Allergens		
ImmunoCAP Allergens, see page 19-32		

Specific IgA

ImmunoCAP Specific IgA measures allergen-specific IgA antibodies in human serum and plasma.

**Reagents Phadia 100**

Product	Size	Art. No.
ImmunoCAP Specific IgA Conjugate	48	10-9458-01
ImmunoCAP Specific IgA Calibrators	1 curve	10-9304-01
ImmunoCAP Specific IgA Curve Controls	3 pairs	10-9308-01
ImmunoCAP IgA/IgG Calibrator ImmunoCAP	16	14-4424-01
ImmunoCAP Specific IgA/IgG Sample Diluent	6 x 10 ml	10-9498-01
System reagents, see page 49		

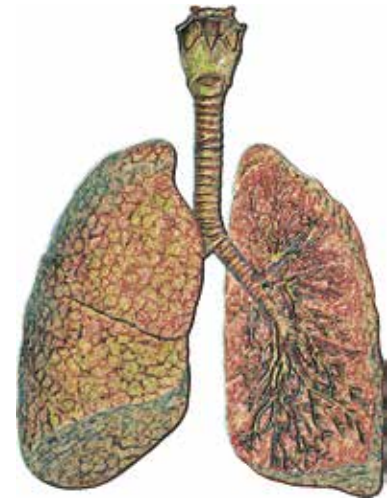
Allergens

ImmunoCAP Allergens, see page 19-32

ECP

ImmunoCAP ECP measures the level of Eosinophil Cationic Protein (ECP) in serum. ECP is a highly cytotoxic protein found in eosinophil granules. Eosinophils are cells chiefly responsible for producing the inflammation characteristic of asthma. When eosinophils in the airway are activated, they undergo degranulation causing airway epithelial damage and desquamation. This can increase hypersensitivity and lead to chronic inflammatory disease of the airway. ECP is released from the activated eosinophils during the inflammation process.

Reference: Koh GC, *et al.* Respir Med. 2007;101:696-705.

**Reagents Phadia 5000 / Phadia 2500 / Phadia 1000 / Phadia 250**

Product	Size	Art. No.
ImmunoCAP ECP Conjugate 50	2 x 50	10-9321-01
ImmunoCAP ECP Calibrator Strip	1 curve	10-9345-01
ImmunoCAP ECP Curve Control Strip	6 x 1 CC	10-9352-01
ImmunoCAP ECP Anti-ECP	16	14-4515-01
ImmunoCAP IgE/ECP/Tryptase Sample Diluent	50 ml	10-9360-01
Control		
ImmunoCAP ECP Control	6 x 0.5 ml	10-9269-01

Reagents Phadia 100

Product	Size	Art. No.
ImmunoCAP ECP (Conjugate, Curve Control)	48, 4CC	10-9520-01
ImmunoCAP ECP Calibrators	1 curve	10-9260-01
ImmunoCAP ECP Curve Control	6 vials	10-9278-01
ImmunoCAP ECP Anti-ECP	16	14-4515-01
ImmunoCAP IgE/ECP/Tryptase Sample Diluent	6 x 3.0 ml	10-9256-01
System reagents, see page 49		
Control		
ImmunoCAP ECP Control	6 x 0.5 ml	10-9269-01

Tryptase

ImmunoCAP Tryptase measures the total level of both alpha-tryptase and beta-tryptase in serum or plasma. Mature beta-tryptase, stored in granula, is only released during mast cell activation. The transiently increased levels serve as a clinical marker confirming severe reactions as anaphylaxis. The continuous release of tryptase reflects the number of mast cells. Elevated levels serve as a biologic marker for certain sensitized patients to get into severe anaphylactic reactions, e.g. after bee/wasp sting or introduction of drugs. Pathological levels of tryptase reflect the increased mast cell burden (mastocytosis) in several haematological disorders.

Reference: Schwartz LB. Immunol Allergy Clin N Am. 2006;26:451-63.



Reagents Phadia 1000 / Phadia 250

Product	Size	Art. No.
ImmunoCAP Tryptase Conjugate 50	2 x 50	10-9522-01
ImmunoCAP Tryptase Calibrator Strip	1 curve	10-9523-01
ImmunoCAP Tryptase Curve Control Strip	6 x 1 CC	10-9524-01
ImmunoCAP Tryptase Anti-Tryptase	16	14-4518-01
ImmunoCAP IgE/ECP/Tryptase Sample Diluent	50 ml	10-9360-01
System reagents, see page 47-48		
Control		
ImmunoCAP Tryptase Control	6 x 0.5 ml	10-9370-01

Reagents Phadia 100

Product	Size	Art. No.
ImmunoCAP Tryptase (Conjugate, Curve Control)	48, 4CC	10-9525-01
ImmunoCAP Tryptase Calibrators	1 curve	10-9526-01
ImmunoCAP Tryptase Curve Control	6 vials	10-9527-01
ImmunoCAP Tryptase Anti-Tryptase	16	14-4518-01
ImmunoCAP IgE/ECP/Tryptase Sample Diluent	6 x 3.0 ml	10-9256-01
System reagents, see page 49		
Control		
ImmunoCAP Tryptase Control	6 x 0.5 ml	10-9370-01

Allergen components

ImmunoCAP Allergen Components measure specific IgE antibodies to individual molecular allergens in serum or plasma. These allergens, which are purified or recombinant proteins, offer the unique opportunity to assess a person's allergic sensitization pattern at the molecular level. Different component groups often elicit different types of reactions, so testing them can indicate if a patient's prior symptoms or positive test results were caused by allergy to a given substance or by a cross-reaction with another allergen. Component testing also helps the clinician weigh a patient's risk of a systemic reaction versus a more mild or localized response.

Reference: Canonica GW, *et al.* World Allergy Organ J. 2013;6:17.

Allergen components, native and recombinant					
Product description		Code	Size	Art. No.	Barcode
Grass pollens					
nCyn d 1 Bermuda grass	<i>Cynodon dactylon</i>	g216	10	14-4972-01	CFA
rPhl p 1 Timothy	<i>Phleum pratense</i>	g205	10	14-5234-01	BSU
rPhl p 2 Timothy	<i>Phleum pratense</i>	g206	10	14-5235-01	COK
nPhl p 4 Timothy	<i>Phleum pratense</i>	g208	10	14-5288-01	COL
rPhl p 6 Timothy	<i>Phleum pratense</i>	g209	10	14-5289-01	BSV
rPhl p 7 Timothy	<i>Phleum pratense</i>	g210	10	14-5290-01	BSW
rPhl p 11 Timothy	<i>Phleum pratense</i>	g211	10	14-5291-01	BSX
rPhl p 12 Profilin, Timothy	<i>Phleum pratense</i>	g212	10	14-5292-01	BSY
rPhl p 1, rPhl p 5b Timothy	<i>Phleum pratense</i>	g213	10	14-5312-01	BU1
rPhl p 7, rPhl p 12 Timothy	<i>Phleum pratense</i>	g214	10	14-5313-01	BU2
rPhl p 5b Timothy	<i>Phleum pratense</i>	g215	10	14-5338-01	BV3
Weed pollens					
nAmb a 1 Ragweed	<i>Ambrosia artemisiifolia (A. elatior)</i>	w230	10	14-4969-01	CF8
nArt v 1 Mugwort	<i>Artemisia vulgaris</i>	w231	10	14-4970-01	CF9
nArt v 3 LTP, Mugwort	<i>Artemisia vulgaris</i>	w233	10	14-4983-01	CJ2
rPar j 2 LPT, Wall pellitory	<i>Parietaria judaica</i>	w211	10	14-5311-01	C2M
rPla l 1 Plantain	<i>Plantago lanceolata</i>	w234	10	14-5751-01	D1H
nSal k 1 Saltwort	<i>Salsola kali</i>	w232	10	14-4978-01	CFE
Tree pollens					
rBet v 1 PR-10, Birch	<i>Betula verrucosa</i>	t215	10	14-5225-01	BPV
rBet v 2 Profilin, Birch	<i>Betula verrucosa</i>	t216	10	14-5226-01	BR1
rBet v 4 Birch	<i>Betula verrucosa</i>	t220	10	14-5287-01	BT7
rBet v 6 Birch	<i>Betula verrucosa</i>	t225	10	14-5345-01	CF1
rBet v 2, rBet v 4 Birch	<i>Betula verrucosa</i>	t221	10	14-5310-01	BU0
nCup a 1 Cypress	<i>Cupressus arizonica</i>	t226	10	14-4977-01	CFD
rOle e 1 Olive	<i>Olea europaea</i>	t224	10	14-5705-01	CTC
nOle e 7 LTP, Olive	<i>Olea europeae</i>	t227	10	14-4993-01	CKT
rOle e 9, Olive	<i>Olea europeae</i>	t240	10	14-4999-01	CTZ
rPla a 1 Maple leaf sycamore, London plane	<i>Platanus acerifolia</i>	t241	10	14-5957-01	D2H
Microorganisms					
rAlt a 1	<i>Alternaria alternata</i>	m229	10	14-5346-01	CE0
rAsp f 1	<i>Aspergillus fumigatus</i>	m218	10	14-5293-01	BPL
rAsp f 2	<i>Aspergillus fumigatus</i>	m219	10	14-5294-01	BPM
rAsp f 3	<i>Aspergillus fumigatus</i>	m220	10	14-5295-01	BT4
rAsp f 4	<i>Aspergillus fumigatus</i>	m221	10	14-5296-01	BPN
rAsp f 6	<i>Aspergillus fumigatus</i>	m222	10	14-5297-01	BPP
Epidermals and animal proteins					
nBos d 6 BSA, Cow	<i>Bos spp.</i>	e204	10	14-5009-01	BRV
rCan f 1 Dog	<i>Canis familiaris</i>	e101	10	14-4955-01	CBN
rCan f 2 Dog	<i>Canis familiaris</i>	e102	10	14-4956-01	CBP
nCan f 3 Dog serum albumin	<i>Canis familiaris</i>	e221	10	14-5241-01	C14
rCan f 5 Dog	<i>Canis familiaris</i>	e226	10	14-4998-01	CMZ
rFel d 1 Cat	<i>Felis domesticus</i>	e94	10	14-4905-01	BY0
rFel d 4 Cat	<i>Felis domesticus</i>	e228	10	14-5702-01	CT9
rEqu c 1 Horse	<i>Equus caballus</i>	e227	10	14-5700-01	CN7
rFel d 2 Cat serum albumin	<i>Felis domesticus</i>	e220	10	14-5240-01	BRX
nSus s Pig serum albumin, Swine	<i>Sus scrofa</i>	e222	10	14-5242-01	C36
Mites					
rDer p 1 House dust mite	<i>Dermatophagoides Pteronyssinus</i>	d202	10	14-5996-01	DP4
rDer p 2 House dust mite	<i>Dermatophagoides Pteronyssinus</i>	d203	10	14-4967-01	CG2
rDer p 10 Tropomyosin, House dust mite	<i>Dermatophagoides Pteronyssinus</i>	d205	10	14-4985-01	CG5
rDer p 23 House dust mite	<i>Dermatophagoides Pteronyssinus</i>	d209	10	14-6040-01	DWU

Allergen components, native and recombinant, cont'd

Product description		Code	Size	Art. No.	Barcode
Venoms					
rApi m 1 Phospholipase A2, Honey bee	<i>Apis mellifera</i>	i208	10	14-4987-01	CJ7
rApi m 2 Hyaluronidase, Honey bee	<i>Apis mellifera</i>	i214	10	14-6014-01	DUD
rApi m 3, Acid phosphatase, Honey bee	<i>Apis mellifera</i>	i215	10	14-6015-01	DUC
rApi m 5 Dipeptidyl peptidase, Honey bee	<i>Apis mellifera</i>	i216	10	14-6016-01	DUB
rApi m 10 Icarapin, Honey bee	<i>Apis mellifera</i>	i217	10	14-6004-01	DR0
rVes v 1 Phospholipase A1, Common wasp	<i>Vespula vulgaris</i>	i211	10	14-4995-01	CMR
rVes v 5 Common wasp	<i>Vespula vulgaris</i>	i209	10	14-4992-01	CJ8
rPol d 5 Paper wasp	<i>Polistes dominulus</i>	i210	10	14-4994-01	CJ9
Occupational					
rHev b 1 Latex	<i>Hevea brasiliensis</i>	k215	10	14-5324-01	C20
rHev b 3 Latex	<i>Hevea brasiliensis</i>	k217	10	14-5326-01	C2A
rHev b 5 Latex	<i>Hevea brasiliensis</i>	k218	10	14-5327-01	C1Z
rHev b 6.02 Latex	<i>Hevea brasiliensis</i>	k220	10	14-5329-01	C22
rHev b 8 Profilin, Latex	<i>Hevea brasiliensis</i>	k221	10	14-5330-01	C1V
rHev b 11 Latex	<i>Hevea brasiliensis</i>	k224	10	14-5333-01	C29
Occupational / Enzymes					
Alkalase	<i>Bacillus spp.</i>	k205	10	14-5126-01	C1F
nAna c 2 Bromelain, Pineapple	<i>Ananas comosus</i>	k202	10	14-5127-01	BT1
nAsp o 21 alpha-amylase	<i>Aspergillus oryzae</i>	k87	10	14-4370-01	595
nCar p 1 Papain, Papaya	<i>Carica papaya</i>	k201	10	14-5130-01	BT0
nGal d 4 Lysozyme, Egg	<i>Gallus spp.</i>	k208	10	14-5128-01	C0T
Maxatase	<i>Bacillus licheniformis</i>	k204	10	14-5129-01	C2F
Savinase	<i>Bacillus spp.</i>	k206	10	14-5132-01	C2R
nSus s Pepsin, Swine	<i>Sus scrofa</i>	k213	10	14-5258-01	C3B
Foods					
rAct d 8 PR-10, Kiwi	<i>Actinidia deliciosa</i>	f430	10	14-4984-01	CG7
rAna o 3 Cashew nut	<i>Anacardium occidentale</i>	f443	10	14-5760-01	D0W
rApi g 1.01 PR-10, Celery	<i>Apium graveolens</i>	f417	10	14-4957-01	CBR
rAra h 1 Peanut	<i>Arachis hypogaea</i>	f422	10	14-4963-01	CDF
rAra h 2 Peanut	<i>Arachis hypogaea</i>	f423	10	14-4964-01	CDG
rAra h 3 Peanut	<i>Arachis hypogaea</i>	f424	10	14-4965-01	CDH
rAra h 8 PR-10, Peanut	<i>Arachis hypogaea</i>	f352	10	14-5341-01	CEZ
rAra h 9 LTP, Peanut	<i>Arachis hypogaea</i>	f427	10	14-4980-01	CFC
rBer e 1 Brazil nut	<i>Bertholletia excelsa</i>	f354	10	14-5343-01	CDS
nBos d 4 alpha-lactalbumin, Milk	<i>Bos spp.</i>	f76	10	14-4522-01	CTP
nBos d 5 beta-lactoglobulin, Milk	<i>Bos spp.</i>	f77	10	14-4523-01	CTR
nBos d 8 Casein, Milk	<i>Bos spp.</i>	f78	10	14-4524-01	CTS
rCor a 1 PR-10, Hazel nut	<i>Corylus avellana</i>	f428	10	14-4981-01	CFB
rCor a 8 LTP, Hazel nut	<i>Corylus avellana</i>	f425	10	14-4968-01	CDP
nCor a 9, Hazel nut	<i>Corylus avellana</i>	f440	10	14-5758-01	D0M
rCor a 14, Hazel nut	<i>Corylus avellana</i>	f439	10	14-5754-01	CZP
rCyp c 1 Carp	<i>Cyprinus carpio</i>	f355	10	14-5344-01	CF0
rGad c 1 Cod	<i>Gadus morhua</i>	f426	10	14-4971-01	CEY
nGal d 1 Ovomucoid, Egg	<i>Gallus spp.</i>	f233	10	14-4805-01	904
nGal d 2 Ovalbumin, Egg	<i>Gallus spp.</i>	f232	10	14-4804-01	903
nGal d 3 Conalbumin, Egg	<i>Gallus spp.</i>	f323	10	14-5222-01	C18
rGly m 4 PR-10, Soy	<i>Glycine max</i>	f353	10	14-5340-01	CDR
nGly m 5 beta-conglycinin, Soy	<i>Glycine max</i>	f431	10	14-4990-01	CLV
nGly m 6 Glycinin	<i>Glycine max</i>	f432	10	14-4991-01	CLU
rJug r 1 Walnut	<i>Juglans regia</i>	f441	10	14-5762-01	D0T
rJug r 3 LTP, Walnut	<i>Juglans regia</i>	f442	10	14-5954-01	D11
rMal d 1 PR-10, Apple	<i>Malus domestica</i>	f434	10	14-5703-01	CWR
rMal d 3 LTP, Apple	<i>Malus domestica</i>	f435	10	14-5704-01	CWS
rPen a 1 Tropomyosin, Shrimp	<i>Penaeus aztecus</i>	f351	10	14-5335-01	C11
rPru p 1 PR-10, Peach	<i>Prunus persica</i>	f419	10	14-4960-01	CBV
rPru p 3 LTP, Peach	<i>Prunus persica</i>	f420	10	14-4961-01	CBW
rPru p 4 Profilin, Peach	<i>Prunus persica</i>	f421	10	14-4962-01	CBX
rTri a 14 LTP, Wheat	<i>Triticum aestivum</i>	f433	10	14-5701-01	CN6
rTri a 19 Omega-5 Gliadin, Wheat	<i>Triticum aestivum</i>	f416	10	14-4954-01	C8H
Gliadin		f98	10	14-5752-01	CXG
Miscellaneous					
nGal-alpha-1,3-Gal (alpha-Gal) Thyroglobulin, bovine		o215	10	14-5997-01	DPC
MUXF3 CCD, Bromelain		o214	10	14-5339-01	CJU

Allergens

In patients suffering from extrinsic asthma, hay fever or atopic eczema, symptoms develop after exposure to specific allergens. This immediate (atopic or anaphylactic) type of allergy is a function of a special type of serum antibodies belonging to the IgE class of immunoglobulins. The allergen list of more than 650 allergens will continuously be updated.



Grass pollens

Product description		Code	Size	Art. No.	Barcode
Bahia grass	<i>Paspalum notatum</i>	g17	16	14-4189-01	432
Barley	<i>Hordeum vulgare</i>	g201	10	14-4821-01	920
Bermuda grass	<i>Cynodon dactylon</i>	g2	16	14-4131-01	379
Brome grass	<i>Bromus inermis</i>	g11	16	14-4238-01	479
Canary grass	<i>Phalaris arundinacea</i>	g71	10	14-4360-01	585
Cocksfoot	<i>Dactylis glomerata</i>	g3	16	14-4117-01	366
Common reed	<i>Phragmites communis</i>	g7	16	14-4187-01	430
Cultivated oat	<i>Avena sativa</i>	g14	16	14-4239-01	480
Cultivated rye	<i>Secale cereale</i>	g12	16	14-4101-01	351
Cultivated wheat	<i>Triticum aestivum</i>	g15	16	14-4188-01	431
False oat-grass	<i>Arrhenatherum elatius</i>	g204	10	14-5154-01	C2S
Johnson grass	<i>Sorghum halepense</i>	g10	16	14-4138-01	384
Maize, Corn	<i>Zea mays</i>	g202	10	14-4822-01	921
Meadow fescue	<i>Festuca elatior</i>	g4	16	14-4133-01	380
Meadow foxtail	<i>Alopecurus pratensis</i>	g16	16	14-4240-01	481
Meadow grass, Kentucky blue	<i>Poa pratensis</i>	g8	16	14-4136-01	382
Redtop, Bentgrass	<i>Agrostis stolonifera</i>	g9	16	14-4137-01	383
Rye-grass	<i>Lolium perenne</i>	g5	16	14-4134-01	381
Salt grass	<i>Distichlis spicata</i>	g203	10	14-5145-01	C1M
Sweet vernal grass	<i>Anthoxanthum odoratum</i>	g1	16	14-4130-01	378
Timothy grass	<i>Phleum pratense</i>	g6	16	14-4100-01	350
Velvet grass	<i>Holcus lanatus</i>	g13	16	14-4139-01	385
Wild rye grass	<i>Elymus triticoides</i>	g70	10	14-4344-01	569
Allergen components					
nCyn d 1 Bermuda grass	<i>Cynodon dactylon</i>	g216	10	14-4972-01	CFA
rPhl p 1 Timothy	<i>Phleum pratense</i>	g205	10	14-5234-01	BSU
rPhl p 2 Timothy	<i>Phleum pratense</i>	g206	10	14-5235-01	C0K
nPhl p 4 Timothy	<i>Phleum pratense</i>	g208	10	14-5288-01	C0L
rPhl p 6 Timothy	<i>Phleum pratense</i>	g209	10	14-5289-01	BSV
rPhl p 7 Timothy	<i>Phleum pratense</i>	g210	10	14-5290-01	BSW
rPhl p 11 Timothy	<i>Phleum pratense</i>	g211	10	14-5291-01	BSX
rPhl p 12 Profilin, Timothy	<i>Phleum pratense</i>	g212	10	14-5292-01	BSY
rPhl p 1, rPhl p 5b Timothy	<i>Phleum pratense</i>	g213	10	14-5312-01	BU1
rPhl p 7, rPhl p 12 Timothy	<i>Phleum pratense</i>	g214	10	14-5313-01	BU2
rPhl p 5b Timothy	<i>Phleum pratense</i>	g215	10	14-5338-01	BV3
Mixes					
g3, g4, g5, g6, g8	<i>Dactylis glomerata, Festuca elatior, Lolium perenne, Phleum pratense, Poa pratensis</i>	gx1	16	14-4163-01	405
g2, g5, g6, g8, g10, g17	<i>Cynodon dactylon, Lolium perenne, Phleum pratense, Poa pratensis, Sorghum halepense, Paspalum notatum</i>	gx2	16	14-4192-01	433
g1, g5, g6, g12, g13	<i>Anthoxanthum odoratum, Lolium perenne, Phleum pratense, Secale cereale, Holcus lanatus</i>	gx3	16	14-4193-01	434
g1, g5, g7, g12, g13	<i>Anthoxanthum odoratum, Lolium perenne, Phragmites communis, Secale cereale, Holcus lanatus</i>	gx4	16	14-4194-01	435
g2, g5, g10, g11, g13, g17	<i>Cynodon dactylon, Lolium perenne, Sorghum halepense, Bromus inermis, Holcus lanatus, Paspalum notatum</i>	gx6	10	14-5200-01	BSZ

Weed pollens

Product description		Code	Size	Art. No.	Barcode
Alfalfa	<i>Medicago sativa</i>	w45	10	14-4951-01	CCR
Camomile	<i>Matricaria chamomilla</i>	w206	10	14-5020-01	BPZ
Careless weed	<i>Amaranthus palmeri</i>	w82	10	14-4953-01	CCT
Cocklebur	<i>Xanthium commune</i>	w13	16	14-4251-01	489
Common pigweed	<i>Amaranthus retroflexus</i>	w14	16	14-4252-01	490
Common ragweed	<i>Ambrosia artemisiifolia (A. elatior)</i>	w1	16	14-4531-01	DWR
Dandelion	<i>Taraxacum vulgare</i>	w8	16	14-4155-01	401
Dog fennel	<i>Eupatorium capillifolium</i>	w46	10	14-4952-01	CCS
False ragweed	<i>Franseria acanthicarpa</i>	w4	16	14-4247-01	485
Firebush (Kochia)	<i>Kochia scoparia</i>	w17	16	14-4255-01	493
Giant ragweed	<i>Ambrosia trifida</i>	w3	16	14-4153-01	399
Goldenrod	<i>Solidago virgaurea</i>	w12	16	14-4250-01	488
Goosefoot, Lamb's quarters	<i>Chenopodium album</i>	w10	16	14-4157-01	403
Japanese Hop	<i>Humulus scandens</i>	w22	16	14-4452-01	BJT
Lupin	<i>Lupinus spp.</i>	w207	10	14-5022-01	C1B
Marguerite, Ox-eye daisy	<i>Chrysanthemum leucanthemum</i>	w7	16	14-4154-01	400
Mugwort	<i>Artemisia vulgaris</i>	w6	16	14-4103-01	353
Nettle	<i>Urtica dioica</i>	w20	16	14-4257-01	495
Plantain (English), Ribwort	<i>Plantago lanceolata</i>	w9	16	14-4156-01	402
Rape	<i>Brassica napus</i>	w203	10	14-5024-01	BPY
Rough marshelder	<i>Iva ciliata</i>	w16	16	14-4254-01	492
Saltwort (prickly), Russian thistle	<i>Salsola kali (pestifer)</i>	w11	16	14-4249-01	487
Scale, Lenscale	<i>Atriplex lentiformis</i>	w15	16	14-4253-01	491
Sheep sorrel	<i>Rumex acetosella</i>	w18	16	14-4256-01	494
Sugar-beet	<i>Beta vulgaris</i>	w210	10	14-5192-01	C30
Sunflower	<i>Helianthus annuus</i>	w204	10	14-5025-01	BT8
Wall pellitory	<i>Parietaria officinalis</i>	w19	16	14-4186-01	429
Wall pellitory	<i>Parietaria judaica</i>	w21	16	14-4104-01	354
Western ragweed	<i>Ambrosia psilostachya</i>	w2	16	14-4152-01	398
Wormwood	<i>Artemisia absinthium</i>	w5	16	14-4248-01	486
Yellow dock	<i>Rumex crispus</i>	w23	10	14-4950-01	CCP

Allergen components

nAmb a 1 Ragweed	<i>Ambrosia artemisiifolia (A. elatior)</i>	w230	10	14-4969-01	CF8
nArt v 1 Mugwort	<i>Artemisia vulgaris</i>	w231	10	14-4970-01	CF9
nArt v 3 LTP, Mugwort	<i>Artemisia vulgaris</i>	w233	10	14-4983-01	CJ2
rPar j 2 LTP, Wall pellitory	<i>Parietaria judaica</i>	w211	10	14-5311-01	C2M
rPla l 1 Plantain	<i>Plantago lanceolata</i>	w234	10	14-5751-01	D1H
nSal k 1 Saltwort	<i>Salsola kali</i>	w232	10	14-4978-01	CFE

Mixes

w1, w6, w9, w10, w11	<i>Ambrosia artemisiifolia (A. elatior), Artemisia vulgaris, Plantago lanceolata, Chenopodium album, Salsola kali</i>	wx1	16	14-4195-01	436
w2, w6, w9, w10, w15	<i>Ambrosia psilostachya, Artemisia vulgaris, Plantago lanceolata, Chenopodium album, Atriplex lentiformis</i>	wx2	16	14-4268-01	506
w6, w9, w10, w12, w20	<i>Artemisia vulgaris, Plantago lanceolata, Chenopodium album, Solidago virgaurea, Urtica dioica</i>	wx3	16	14-4196-01	437
w1, w6, w7, w8, w12	<i>Ambrosia artemisiifolia (A. elatior), Artemisia vulgaris, Chrysanthemum leucanthemum, Taraxacum vulgare, Solidago virgaurea</i>	wx5	16	14-4197-01	438
w9, w10, w11, w18	<i>Plantago lanceolata, Chenopodium album, Salsola kali, Rumex acetosella</i>	wx6	16	14-4198-01	439
w7, w8, w9, w10, w12	<i>Chrysanthemum leucanthemum, Taraxacum vulgare, Plantago lanceolata, Chenopodium album, Solidago virgaurea</i>	wx7	16	14-4269-01	507
w1, w2, w3	<i>Ambrosia artemisiifolia (A. elatior), Ambrosia psilostachya, Ambrosia trifida</i>	wx209	10	14-5026-01	BR0

Tree pollens

Product description		Code	Size	Art. No.	Barcode
Acacia	<i>Acacia longifolia</i>	t19	16	14-4233-01	474
American beech	<i>Fagus grandifolia</i>	t5	16	14-4148-01	394
Australian pine	<i>Casuarina equisetifolia</i>	t73	10	14-4374-01	599
Bald cypress	<i>Taxodium distichum</i>	t37	10	14-4941-01	CCE
Bayberry	<i>Myrica cerifera</i>	t56	10	14-4947-01	CCL
Box-elder	<i>Acer negundo</i>	t1	16	14-4161-01	406
Cedar	<i>Libocedrus decurrens</i>	t212	10	14-5185-01	C01
Cedar elm	<i>Ulmus crassifolia</i>	t45	10	14-4944-01	CCH
Chestnut	<i>Castanea sativa</i>	t206	10	14-5140-01	C04
Common silver birch	<i>Betula verrucosa</i>	t3	16	14-4102-01	352
Cottonwood	<i>Populus deltoides</i>	t14	16	14-4229-01	470
Cypress	<i>Cupressus arizonica</i>	t222	10	14-5309-01	BTZ
Date	<i>Phoenix canariensis</i>	t214	10	14-5218-01	C2P
Douglas fir	<i>Pseudotsuga taxifolia</i>	t207	10	14-5146-01	C15
Elder	<i>Sambucus nigra</i>	t205	10	14-5002-01	C0P
Elm	<i>Ulmus americana</i>	t8	16	14-4226-01	467
Eucalyptus, Gum-tree	<i>Eucalyptus spp.</i>	t18	16	14-4232-01	473
European ash	<i>Fraxinus excelsior</i>	t25	10	14-4924-01	C79
Grey alder	<i>Alnus incana</i>	t2	16	14-4146-01	392
Hackberry	<i>Celtis occidentalis</i>	t44	10	14-4943-01	CCG
Hazel	<i>Corylus avellana</i>	t4	16	14-4147-01	393
Horn beam	<i>Carpinus betulus</i>	t209	10	14-5148-01	C0D
Horse chestnut	<i>Aesculus hippocastanum</i>	t203	10	14-5003-01	C0M
Italian/Mediterranean/Funeral cypress	<i>Cupressus sempervirens</i>	t23	16	14-4237-01	478
Japanese cedar	<i>Cryptomeria japonica</i>	t17	16	14-4118-01	367
Linden	<i>Tilia cordata</i>	t208	10	14-4823-01	922
Maple leaf sycamore, London plane	<i>Platanus acerifolia</i>	t11	16	14-4228-01	469
Melaleuca, Cajeput-tree	<i>Melaleuca leucadendron</i>	t21	16	14-4235-01	476
Mesquite	<i>Prosopis juliflora</i>	t20	16	14-4234-01	475
Mountain juniper	<i>Juniperus sabinoides</i>	t6	16	14-4225-01	466
Mulberry	<i>Morus alba</i>	t70	10	14-4325-01	553
Oak	<i>Quercus alba</i>	t7	16	14-4149-01	395
Oil Palm	<i>Elaeis guineensis</i>	t223	10	14-5308-01	C3G
Olive	<i>Olea europaea</i>	t9	16	14-4150-01	396
Paloverde	<i>Cercidium floridum</i>	t219	10	14-5260-01	C3K
Pecan, Hickory	<i>Carya pecan</i>	t22	16	14-4236-01	477
Peppertree	<i>Schinus molle</i>	t217	10	14-5167-01	C1N
Pine	<i>Pinus radiata</i>	t213	10	14-5208-01	C02
Privet	<i>Ligustrum vulgare</i>	t210	10	14-4834-01	996
Queen palm	<i>Arecastrum romanzoffianum</i>	t72	10	14-4373-01	598
Red cedar	<i>Juniperus virginiana</i>	t57	10	14-4948-01	CCM
Red mulberry	<i>Morus rubra</i>	t71	10	14-4949-01	CCN
Russian olive	<i>Elaeagnus angustifolia</i>	t54	10	14-4945-01	CCJ
Scotch broom	<i>Cytisus scoparius</i>	t55	10	14-4946-01	CCK
Spruce	<i>Picea excelsa</i>	t201	10	14-5005-01	C0J
Sweet gum	<i>Liquidambar styraciflua</i>	t211	10	14-5155-01	C03
Walnut	<i>Juglans californica</i>	t10	16	14-4227-01	468
White ash	<i>Fraxinus americana</i>	t15	16	14-4230-01	471
White hickory	<i>Carya tomentosa (syn. C. alba)</i>	t41	10	14-4942-01	CCF
White pine	<i>Pinus strobus</i>	t16	16	14-4231-01	472
Willow	<i>Salix caprea</i>	t12	16	14-4151-01	397
Virginia live oak	<i>Quercus virginiana</i>	t218	10	14-5252-01	BZY
Allergen components					
rBet v 1 PR-10, Birch	<i>Betula verrucosa</i>	t215	10	14-5225-01	BPV
rBet v 2 Profilin, Birch	<i>Betula verrucosa</i>	t216	10	14-5226-01	BR1
rBet v 4 Birch	<i>Betula verrucosa</i>	t220	10	14-5287-01	BT7
rBet v 6 Birch	<i>Betula verrucosa</i>	t225	10	14-5345-01	CF1
rBet v 2, rBet v 4 Birch	<i>Betula verrucosa</i>	t221	10	14-5310-01	BU0
nCup a 1 Cypress	<i>Cupressus arizonica</i>	t226	10	14-4977-01	CFD
rOle e 1 Olive	<i>Olea europaea</i>	t224	10	14-5705-01	CTC
nOle e 7 LTP, Olive	<i>Olea europaea</i>	t227	10	14-4993-01	CKT
rOle e 9, Olive	<i>Olea europaea</i>	t240	10	14-4999-01	CTZ
rPla a 1 Maple leaf sycamore, London plane	<i>Platanus acerifolia</i>	t241	10	14-5957-01	D2H
Mixes					
t1, t3, t7, t8, t10	<i>Acer negundo, Betula verrucosa, Quercus alba, Ulmus americana, Juglans californica</i>	tx1	16	14-4199-01	440
t1, t7, t8, t14, t22	<i>Acer negundo, Quercus alba, Ulmus americana, Populus deltoides, Carya pecan</i>	tx2	16	14-4270-01	508
t6, t7, t8, t14, t20	<i>Juniperus sabinoides, Quercus alba, Ulmus americana, Populus deltoides, Prosopis juliflora</i>	tx3	16	14-4271-01	509
t7, t8, t11, t12, t14	<i>Quercus alba, Ulmus americana, Platanus acerifolia, Salix caprea, Populus deltoides</i>	tx4	16	14-4200-01	441

Tree pollens, cont'd

Product description	Code	Size	Art. No.	Barcode
Mixes				
t2, t4, t8, t12, t14 <i>Alnus incana, Corylus avellana, Ulmus americana, Salix caprea, Populus deltoides</i>	tx5	16	14-4201-01	442
t1, t3, t5, t7, t10 <i>Acer negundo, Betula verrucosa, Fagus grandifolia, Quercus alba, Juglans californica</i>	tx6	16	14-4202-01	443
t9, t12, t16, t18, t19, t21 <i>Olea europaea, Salix caprea, Pinus strobus, Eucalyptus spp., Acacia longifolia, Melaleuca leucadendron</i>	tx7	16	14-4272-01	510
t1, t3, t4, t7, t11 <i>Acer negundo, Betula verrucosa, Corylus avellana, Quercus alba, Platanus acerifolia</i>	tx8	16	14-4273-01	511
t2, t3, t4, t7, t12 <i>Alnus incana, Betula verrucosa, Corylus avellana, Quercus alba, Salix caprea</i>	tx9	16	14-4274-01	512
t2, t3, t4, t15 <i>Alnus incana, Betula verrucosa, Corylus avellana, Fraxinus americana</i>	tx10	10	14-5183-01	BPX

Microorganisms

Product description	Code	Size	Art. No.	Barcode	
<i>Acremonium kiliense</i>	m202	10	14-4830-01	992	
<i>Alternaria alternata</i>	m6	16	14-4106-01	356	
<i>Aspergillus flavus</i>	m228	10	14-5342-01	BZU	
<i>Aspergillus fumigatus</i>	m3	16	14-4119-01	368	
<i>Aspergillus niger</i>	m207	10	14-4831-01	993	
<i>Aspergillus terreus</i>	m36	10	14-4920-01	BYC	
<i>Aureobasidium pullulans</i>	m12	16	14-4263-01	501	
<i>Botrytis cinerea</i>	m7	16	14-4258-01	496	
<i>Candida albicans</i>	m5	16	14-4120-01	369	
<i>Chaetomium globosum</i>	m208	10	14-5202-01	C00	
<i>Cladosporium herbarum</i>	m2	16	14-4105-01	355	
<i>Curvularia lunata</i>	m16	16	14-4267-01	505	
<i>Epicoccum purpurascens</i>	m14	16	14-4265-01	503	
<i>Fusarium proliferatum (F. moniliforme)</i>	m9	16	14-4260-01	498	
<i>Setomelanomma rostrata (Helminthosporium halodes)</i>	m8	16	14-4259-01	497	
<i>Malassezia spp.</i>	m227	10	14-5321-01	BT6	
<i>Mucor racemosus</i>	m4	16	14-4145-01	391	
<i>Penicillium chrysogenum (P. notatum)</i>	m1	16	14-4160-01	405	
<i>Penicillium glabrum</i>	m209	10	14-5203-01	BT3	
<i>Phoma betae</i>	m13	16	14-4264-01	502	
<i>Pityrosporum orbiculare (syn. Malassezia)</i>	m70	10	14-4349-01	574	
<i>Rhizopus nigricans</i>	m11	16	14-4262-01	500	
Staphylococcal enterotoxin A	m80	10	14-4889-01	BDG	
Staphylococcal enterotoxin B	m81	10	14-4890-01	BDD	
Staphylococcal enterotoxin C	m223	10	14-5298-01	BT5	
Staphylococcal enterotoxin TSST	m226	10	14-5301-01	C0X	
<i>Stemphylium herbarum (S. botryosum)</i>	m10	16	14-4261-01	499	
<i>Tilletia tritici</i>	m201	10	14-5029-01	C1C	
<i>Trichoderma viride</i>	m15	16	14-4266-01	504	
<i>Trichophyton mentagrophytes var. goetzii</i>	m210	10	14-5223-01	C0Y	
<i>Trichophyton mentagrophytes var. interdigitale</i>	m211	10	14-5224-01	C0R	
<i>Trichophyton rubrum</i>	m205	16	14-4483-01	A2J	
<i>Trichosporon pullulans</i>	m203	10	14-5027-01	C19	
<i>Ulocladium chartarum</i>	m204	10	14-5028-01	C1Y	
Allergen components					
rAlt a 1	<i>Alternaria alternata</i>	m229	10	14-5346-01	CE0
rAsp f 1	<i>Aspergillus fumigatus</i>	m218	10	14-5293-01	BPL
rAsp f 2	<i>Aspergillus fumigatus</i>	m219	10	14-5294-01	BPM
rAsp f 3	<i>Aspergillus fumigatus</i>	m220	10	14-5295-01	BT4
rAsp f 4	<i>Aspergillus fumigatus</i>	m221	10	14-5296-01	BPN
rAsp f 6	<i>Aspergillus fumigatus</i>	m222	10	14-5297-01	BPP
Mixes					
m1, m2, m3, m6 <i>Penicillium chrysogenum, Cladosporium herbarum, Aspergillus fumigatus, Alternaria alternata</i>	mx1	16	14-4204-01	445	
m1, m2, m3, m5, m6, m8 <i>Penicillium chrysogenum, Cladosporium herbarum, Aspergillus fumigatus, Candida albicans, Alternaria alternata, Setomelanomma rostrata</i>	mx2	16	14-4320-01	851	
m3, m207, m36, m228 <i>A. fumigatus, A. niger, A. terreus, A. flavus</i>	mx4	10	14-4921-01	BYD	

Epidermals and animal proteins				
Product description	Code	Size	Art. No.	Barcode
Budgerigar droppings	e77	10	14-4303-01	537
Budgerigar feathers	e78	10	14-4304-01	538
Canary bird droppings	e200	10	14-4913-01	BY5
Canary bird feathers	e201	10	14-4824-01	923
Cat dander	e1	16	14-4109-01	359
Chicken droppings	e218	10	14-5229-01	BRW
Chicken feathers	e85	10	14-4170-01	517
Chicken, serum proteins	e219	10	14-5230-01	C24
Chinchilla epithelium	e208	10	14-5011-01	C1X
Cow dander	e4	16	14-4166-01	411
Deer epithelium	e216	10	14-5156-01	C37
Dog dander	e5	16	14-4110-01	360
Duck feathers	e86	10	14-4171-01	518
Ferret epithelium	e217	10	14-5157-01	C1H
Finch feathers	e214	10	14-5013-01	C2D
Fox epithelium	e210	10	14-5014-01	C38
Gerbil epithelium	e209	10	14-5015-01	C1W
Goat epithelium	e80	10	14-4306-01	540
Goose feathers	e70	16	14-4169-01	414
Guinea pig epithelium	e6	16	14-4167-01	412
Hamster epithelium	e84	10	14-4310-01	544
Horse dander	e3	16	14-4122-01	371
Horse, serum proteins	e205	10	14-5016-01	C2T
Mink epithelium	e203	10	14-5030-01	C39
Mouse epithelium	e71	10	14-4394-01	603
Mouse epithelium, serum proteins and urine proteins	e88	10	14-4327-01	555
Mouse serum proteins	e76	10	14-4399-01	608
Mouse urine proteins	e72	10	14-4395-01	604
Parakeet droppings	e197	10	14-4910-01	BY2
Parakeet feathers	e196	10	14-4909-01	BY1
Parakeet serum	e198	10	14-4911-01	BY3
Parrot feathers	e213	10	14-4832-01	994
Pigeon feathers	e215	10	14-5032-01	BP5
Rabbit epithelium	e82	10	14-4308-01	542
Rabbit, serum proteins	e206	10	14-5033-01	C2H
Rabbit, urine proteins	e211	10	14-5034-01	C44
Rat epithelium	e73	10	14-4396-01	605
Rat epithelium, serum proteins and urine proteins	e87	10	14-4326-01	554
Rat serum proteins	e75	10	14-4398-01	607
Rat urine proteins	e74	10	14-4397-01	606
Reindeer epithelium	e202	10	14-5035-01	C3J
Sheep epithelium	e81	10	14-4307-01	541
Swine epithelium	e83	10	14-4309-01	543
Turkey feathers	e89	10	14-4356-01	581
Allergen components				
nBos d 6 BSA, Cow	e204	10	14-5009-01	BRV
rCan f 1 Dog	e101	10	14-4955-01	CBN
rCan f 2 Dog	e102	10	14-4956-01	CBP
nCan f 3 Dog serum albumin	e221	10	14-5241-01	C14
rCan f 5 Dog	e226	10	14-4998-01	CMZ
rFel d 1 Cat	e94	10	14-4905-01	BY0
rFel d 2 Cat serum albumin	e220	10	14-5240-01	BRX
rFel d 4 Cat	e228	10	14-5702-01	CT9
rEqu c 1 Horse	e227	10	14-5700-01	CN7
nSus s Pig serum albumin, Swine	e222	10	14-5242-01	C36
Mixes				
e1, e3, e4, e5 Cat dander, Horse dander, Cow dander, Dog dander	ex1	16	14-4203-01	444
e1, e5, e6, e87, e88 Cat dander, Dog dander, Guinea pig epithelium, Rat, Mouse	ex2	16	14-4512-01	BN7
e6, e82, e84, e87, e88 Guinea pig epithelium, Rabbit epithelium, Hamster epithelium, Rat, Mouse	ex70	10	14-4276-01	519
e70, e85, e86, e89 Goose feathers, Chicken feathers, Duck feathers, Turkey feathers	ex71	10	14-4277-01	520
e78, e201, e196, e213, e214 Budgerigar feathers, Canary bird feathers, Parakeet feathers, Parrot feathers, Finch feathers	ex72	10	14-4278-01	521
e70, e85, e86, e213 Goose feathers, Chicken feathers, Duck feathers, Parrot feathers	ex73	10	14-4828-01	927
Allergens for research use only				
Swine, urine proteins	Re212	10	14-5039-10	645

Mites

Product description		Code	Size	Art. No.	Barcode
<i>Acarus siro</i>	Storage mite	d70	10	14-4300-01	534
<i>Blomia tropicalis</i>	House dust mite	d201	10	14-4896-01	BHP
<i>Dermatophagoides farinae</i>	House dust mite	d2	16	14-4108-01	358
<i>Dermatophagoides microceras</i>	House dust mite	d3	16	14-4241-01	482
<i>Dermatophagoides pteronyssinus</i>	House dust mite	d1	16	14-4107-01	357
<i>Euroglyphus maynei</i>	House dust mite	d74	10	14-4342-01	567
<i>Glycyphagus domesticus</i>	Storage mite	d73	10	14-4393-01	602
<i>Lepidoglyphus destructor</i>	Storage mite	d71	10	14-4301-01	535
<i>Tyrophagus putrescentiae</i>	Storage mite	d72	10	14-4302-01	536
Allergen components					
rDer p 1 House dust mite	<i>Dermatophagoides Pteronyssinus</i>	d202	10	14-5996-01	DP4
rDer p 2 House dust mite	<i>Dermatophagoides Pteronyssinus</i>	d203	10	14-4967-01	CG2
rDer p 10 Tropomyosin, House dust mite	<i>Dermatophagoides Pteronyssinus</i>	d205	10	14-4985-01	CG5
rDer p 23 House dust mite	<i>Dermatophagoides Pteronyssinus</i>	d209	10	14-6040-01	DWU

House dust

Product description		Code	Size	Art. No.	Barcode
Greer Labs., Inc.		h1	16	14-4116-01	365
Hollister-Stier Labs.		h2	16	14-4140-01	386
Mix					
h2, d1, d2, i6		hx2	16	14-4205-01	446
Hollister-Stier Labs., <i>Dermatophagoides pteronyssinus</i> , <i>Dermatophagoides farinae</i> , <i>Blatella germanica</i>					

Insects

Product description		Code	Size	Art. No.	Barcode
Berlin beetle	<i>Trogoderma angustum (Solier)</i>	i76	10	14-4362-01	587
Blood worm	<i>Chironomus thummi (C. riparius)</i>	i73	10	14-4328-01	556
Cockroach, American	<i>Periplaneta americana</i>	i206	10	14-5274-01	C07
Cockroach, German	<i>Blatella germanica</i>	i6	16	14-4224-01	465
Cockroach, Oriental	<i>Blatta orientalis</i>	i207	10	14-5275-01	BTW
Fire ant	<i>Solenopsis invicta</i>	i70	10	14-4343-01	568
Grain weevil	<i>Sitophilus granarius</i>	i202	10	14-5150-01	C1P
Green nimitti	<i>Cladotanytarsus Lewisii</i>	i72	10	14-4361-01	586
Horse fly	<i>Tabanus spp.</i>	i204	10	14-5207-01	BPJ
Mediterranean flour moth	<i>Ephestia (syn. Anagasta) kuehniella</i>	i203	10	14-5151-01	C2J
Mosquito	<i>Aedes communis</i>	i71	10	14-4316-01	550
Moth	<i>Bombyx mori</i>	i8	16	14-4474-01	829

Venoms

Product description		Code	Size	Art. No.	Barcode
Bumblebee	<i>Bombus terrestris</i>	i205	10	14-5270-01	C06
Common wasp (Yellow jacket)	<i>Vespa spp.</i>	i3	16	14-4525-01	CVA
European Paper Wasp	<i>Polistes dominulus</i>	i77	10	14-4527-01	CVB
European hornet	<i>Vespa crabro</i>	i75	10	14-4340-01	565
Honey bee	<i>Apis mellifera</i>	i1	16	14-4143-01	389
Paper wasp	<i>Polistes spp.</i>	i4	16	14-4526-01	CWX
White-faced hornet	<i>Dolichovespula maculata</i>	i2	16	14-4221-01	462
Yellow hornet	<i>Dolichovespula arenaria</i>	i5	16	14-4223-01	464
Allergen components					
rApi m 1 Phospholipase A2, Honey bee	<i>Apis mellifera</i>	i208	10	14-4987-01	CJ7
rApi m 2 Hyaluronidase, Honey bee	<i>Apis mellifera</i>	i214	10	14-6014-01	DUD
rApi m 3, Acid phosphatase, Honey bee	<i>Apis mellifera</i>	i215	10	14-6015-01	DUC
rApi m 5 Dipeptidyl peptidase, Honey bee	<i>Apis mellifera</i>	i216	10	14-6016-01	DUB
rApi m 10 Icarapin, Honey bee	<i>Apis mellifera</i>	i217	10	14-6004-01	DR0
rVes v 1 Phospholipase A1, Common wasp	<i>Vespa vulgaris</i>	i211	10	14-4995-01	CMR
rVes v 5 Common wasp	<i>Vespa vulgaris</i>	i209	10	14-4992-01	CJ8
rPol d 5 European Paper Wasp	<i>Polistes dominulus</i>	i210	10	14-4994-01	CJ9

Drugs

Product description	Code	Size	Art. No.	Barcode
Amoxicilloyl	c6	16	14-4451-01	991
Ampicilloyl	c5	16	14-4450-01	990
Cefaclor	c7	10	14-5336-01	BP4
Chlorhexidine	c8	10	14-4926-01	C8S
Chymopapain	c209	10	14-5259-01	C35
Gelatin bovine	c74	10	14-4854-01	A2X
Insulin bovine	c71	10	14-4392-01	601
Insulin human	c73	10	14-4347-01	572
Insulin porcine	c70	10	14-4391-01	600
Penicilloyl G	c1	16	14-4164-01	409
Penicilloyl V	c2	16	14-4165-01	410
Pholcodine	c261	10	14-4975-01	CF6
Morphine	c260	10	14-4974-01	CF7
Suxamethonium (succinylcholine)	c202	10	14-5266-01	BRU
Allergens for research use only				
ACTH (Adrenocorticotrophic hormone)	Rc206	10	14-5162-10	758
Tetanus toxoid	Rc208	10	14-5227-10	902

Occupational

Product description		Code	Size	Art. No.	Barcode
Abachi wood dust	<i>Triplochiton scleroxylon</i>	k212	10	14-5217-01	BT2
Bougainvillea	<i>Bougainvillea spp.</i>	k214	10	14-5286-01	C3L
Castor bean		k71	10	14-4364-01	589
Chloramin T		k85	10	14-4368-01	593
Cotton seed		k83	10	14-4366-01	591
Ethylene oxide		k78	10	14-4314-01	548
Ficus	<i>Ficus spp.</i>	k81	10	14-4365-01	590
Formaldehyde/Formalin		k80	10	14-4341-01	566
Green coffee bean	<i>Coffea spp.</i>	k70	10	14-4363-01	588
Hexahydrophthalic anhydrid		k209	10	14-5189-01	C1J
Isocyanate HDI (Hexamethylene diisocyanate)		k77	10	14-4313-01	547
Isocyanate MDI (Diphenylmethane diisocyanate)		k76	10	14-4312-01	546
Isocyanate TDI (Toluene diisocyanate)		k75	10	14-4311-01	545
Ispaghula		k72	10	14-4348-01	573
Latex	<i>Hevea brasiliensis</i>	k82	10	14-4511-01	BJ1
Methyltetrahydrophthalic anhydrid		k211	10	14-5191-01	C2Y
Phthalic anhydride		k79	10	14-4315-01	549
Silk	<i>Bombyx mori</i>	k74	10	14-4333-01	560
Silk waste		k73	10	14-4400-01	609
Sunflower seed		k84	10	14-4367-01	592
Trimellitic anhydride, TMA		k86	10	14-4369-01	594
Allergen components					
Alkalase	<i>Bacillus spp.</i>	k205	10	14-5126-01	C1F
nAna c 2 Bromelain, Pineapple		k202	10	14-5127-01	BT1
nAsp o 21 alpha-amylase	<i>Aspergillus oryzae</i>	k87	10	14-4370-01	595
nCar p 1 Papain, Papaya		k201	10	14-5130-01	BT0
nGal d 4 Lysozyme, Egg		k208	10	14-5128-01	C0T
rHev b 1 Latex	<i>Hevea brasiliensis</i>	k215	10	14-5324-01	C20
rHev b 3 Latex	<i>Hevea brasiliensis</i>	k217	10	14-5326-01	C2A
rHev b 5 Latex	<i>Hevea brasiliensis</i>	k218	10	14-5327-01	C1Z
rHev b 6.02 Latex	<i>Hevea brasiliensis</i>	k220	10	14-5329-01	C22
rHev b 8 Profilin, Latex	<i>Hevea brasiliensis</i>	k221	10	14-5330-01	C1V
rHev b 11 Latex	<i>Hevea brasiliensis</i>	k224	10	14-5333-01	C29
Maxatase	<i>Bacillus licheniformis</i>	k204	10	14-5129-01	C2F
Savinase	<i>Bacillus spp.</i>	k206	10	14-5132-01	C2R
nSus s Pepsin, Swine		k213	10	14-5258-01	C3B

Occupational, cont'd

Product description	Code	Size	Art. No.	Barcode
Mixes				
e3, e4, e70, e85 Horse dander, Cow dander, Goose feathers, Chicken feathers	pax1	10	14-4350-01	575
m3, m6, g12, g15 <i>Aspergillus fumigatus</i> , <i>Alternaria alternata</i> , Rye pollen, Wheat pollen	pax3	10	14-4352-01	577
f4, f14, k87, i202 Wheat, Soya bean, alpha-amylase, <i>Sitophilus granarius</i>	pax4	10	14-4353-01	578
k75, k76, k77, k79 Isocyanates (TDI, MDI, HDI), Phthalic anhydride	pax5	10	14-4354-01	579
k78, k79, k80, k85 Ethylene oxide, Phthalic anhydride, Formaldehyde, Chloramin T	pax6	10	14-4355-01	580
Allergens for research use only				
Maleic anhydrid	Rk210	10	14-5190-10	796

Parasites

Product description	Code	Size	Art. No.	Barcode
Anisakis	p4	16	14-4475-01	830
Ascaris	p1	16	14-4244-01	483

Miscellaneous

Product description	Code	Size	Art. No.	Barcode
Artemia salina, fish feed	o202	10	14-5122-01	C31
Cotton, crude fibers	o1	16	14-4476-01	831
Daphnia, fish feed	o207	10	14-5124-01	C2W
nGal-alpha-1,3-Gal (alpha-Gal) Thyroglobulin, bovine	o215	10	14-5997-01	DPC
Mealworm <i>Tenebrio molitor</i>	o211	10	14-5251-01	C3C
MUXF3 CCD, Bromelain	o214	10	14-5339-01	CJU
Seminal fluid	o70	10	14-4371-01	596
Streptavidin	o212	10	14-5320-01	BZV
Tetramin, fish feed	o203	10	14-5135-01	C2V
Tobacco leaf	o201	10	14-5136-01	BTL
Allergens for research use only				
MBP (maltose binding protein)	Ro213	10	14-5334-10	BN3

Other mixes – Regional

Product description	Code	Size	Art. No.	Barcode
g6, w6, w9, w21, t3 <i>Phleum pratense</i> , <i>Artemisia vulgaris</i> , <i>Plantago lanceolata</i> , <i>Parietaria judaica</i> , <i>Betula verrucosa</i>	rx1	10	14-5193-01	BRN
d2, e1, e3, e5, m6 <i>Dermatophagoides farinae</i> , Cat dander, Horse dander, Dog dander, <i>Alternaria alternata</i>	rx2	10	14-5184-01	BPS
g2, g5, g17, w1, w9, w10 <i>Cynodon dactylon</i> , <i>Lolium perenne</i> , <i>Paspalum notatum</i> , <i>Ambrosia elatior</i> , <i>Plantago lanceolata</i> , <i>Chenopodium album</i>	rx3	10	14-5198-01	BTT
g2, g5, g11, w1, w6, w9 <i>Cynodon dactylon</i> , <i>Lolium perenne</i> , <i>Bromus inermis</i> , <i>Ambrosia elatior</i> , <i>Artemisia vulgaris</i> , <i>Plantago lanceolata</i>	rx4	10	14-5199-01	BTU
d1, e1, m3, i6 <i>Dermatophagoides pteronyssinus</i> , Cat dander, <i>Aspergillus fumigatus</i> , <i>Blatella germanica</i>	rx5	10	14-5246-01	BPT
t3, g6, w6, m2, m6 <i>Betula verrucosa</i> , <i>Phleum pratense</i> , <i>Artemisia vulgaris</i> , <i>Cladosporium herbarum</i> , <i>Alternaria alternata</i>	rx6	10	14-5322-01	BPU
d1, e1, e3, e5, e82 <i>Dermatophagoides pteronyssinus</i> , Cat dander, Horse dander, Dog dander, Rabbit epithelium	rx7	10	14-5323-01	BPW

Foods – Fruits & vegetables						
Product description		Code	Size	Art. No.	Barcode	
Apple	<i>Malus x domestica</i>	f49	16	14-4220-01	461	
Apricot	<i>Prunus armeniaca</i>	f237	10	14-4812-01	911	
Asparagus	<i>Asparagus officinalis</i>	f261	10	14-5046-01	C0B	
Aubergine, eggplant	<i>Solanum melongena</i>	f262	10	14-5047-01	BZZ	
Avocado	<i>Persea americana</i>	f96	10	14-4346-01	571	
Bamboo shoot	<i>Phyllostachys pubescens</i>	f51	16	14-4455-01	815	
Banana	<i>Musa spp.</i>	f92	10	14-4334-01	561	
Beetroot	<i>Beta vulgaris</i>	f319	10	14-5216-01	C1A	
Blackberry	<i>Rubus fruticosus</i>	f211	10	14-5051-01	C0E	
Blueberry	<i>Vaccinium myrtillus</i>	f288	10	14-5052-01	BTF	
Broccoli	<i>Brassica oleracea var. italica</i>	f260	10	14-4841-01	AAD	
Brussel sprouts	<i>Brassica oleracea var. gemmifera</i>	f217	10	14-5054-01	C1S	
Cabbage	<i>Brassica oleracea var. capitata</i>	f216	10	14-4814-01	913	
Carambola	<i>Averrhoa carambola</i>	f295	10	14-5056-01	C3H	
Carrot	<i>Daucus carota</i>	f31	16	14-4210-01	451	
Cauliflower	<i>Brassica oleracea var. botrytis</i>	f291	10	14-5060-01	C05	
Celery	<i>Apium graveolens</i>	f85	10	14-4296-01	530	
Cherry	<i>Prunus avium</i>	f242	10	14-4811-01	910	
Cucumber	<i>Cucumis sativus</i>	f244	10	14-4839-01	AAB	
Date	<i>Phoenix dactylifera</i>	f289	10	14-5068-01	BSF	
Fennel, fresh	<i>Foeniculum vulgare</i>	f276	10	14-5071-01	BTG	
Fig	<i>Ficus carica</i>	f328	10	14-5244-01	BSR	
Garlic	<i>Allium sativum</i>	f47	16	14-4218-01	459	
Grape	<i>Vitis vinifera</i>	f259	10	14-4809-01	908	
Grapefruit	<i>Citrus paradisi</i>	f209	16	14-4431-01	680	
Guava	<i>Psidium guajava</i>	f292	10	14-5077-01	C1E	
Jack fruit	<i>Artocarpus heterophyllus</i>	f318	10	14-5215-01	C3F	
Jujube	<i>Ziziphus jujuba</i>	f336	10	14-5255-01	C32	
Kiwi	<i>Actinidia deliciosa</i>	f84	10	14-4295-01	529	
Lemon	<i>Citrus limon</i>	f208	10	14-4829-01	685	
Lettuce	<i>Lactuca sativa</i>	f215	10	14-4813-01	912	
Lime	<i>Citrus aurantifolia</i>	f306	10	14-5188-01	BTN	
Litchi	<i>Litchi chinensis</i>	f348	10	14-5285-01	C2N	
Mandarin (tangerine, clementine, satsumas)	<i>Citrus reticulata</i>	f302	10	14-5160-01	BPB	
Mango	<i>Mangifera indica</i>	f91	10	14-4331-01	559	
Melon	<i>Cucumis melo spp.</i>	f87	10	14-4298-01	532	
Olive (black, fresh)	<i>Olea europaea</i>	f342	10	14-5279-01	C0F	
Onion	<i>Allium cepa</i>	f48	16	14-4219-01	460	
Orange	<i>Citrus sinensis</i>	f33	16	14-4129-01	377	
Papaya	<i>Carica papaya</i>	f293	10	14-5089-01	BSG	
Passion fruit	<i>Passiflora edulis</i>	f294	10	14-5091-01	C0W	
Peach	<i>Prunus persica</i>	f95	10	14-4337-01	564	
Pear	<i>Pyrus communis</i>	f94	10	14-4336-01	563	
Persimon (kaki fruit, sharon)	<i>Diospyros kaki</i>	f301	10	14-5161-01	C2B	
Pineapple	<i>Ananas comosus</i>	f210	10	14-4810-01	909	
Plum	<i>Prunus domestica</i>	f255	10	14-4840-01	AAC	
Potato	<i>Solanum tuberosum</i>	f35	16	14-4211-01	452	
Pumpkin	<i>Cucurbita pepo</i>	f225	16	14-4433-01	705	
Raspberry	<i>Rubus idaeus</i>	f343	10	14-5280-01	C09	
Red currant	<i>Ribes sylvestre</i>	f322	10	14-5221-01	C21	
Rose hip	<i>Rosa spp.</i>	f330	10	14-5247-01	C1R	
Spinach	<i>Spinachia oleracea</i>	f214	16	14-4432-01	707	
Strawberry	<i>Fragaria vesca</i>	f44	16	14-4216-01	457	
Sweet potato	<i>Ipomea batatas</i>	f54	16	14-4458-01	823	
Tomato	<i>Lycopersicon lycopersicum</i>	f25	16	14-4182-01	425	
Watermelon	<i>Citrullus lanatus</i>	f329	10	14-5245-01	BSS	
Allergen components						
rAct d 8 PR-10, Kiwi	<i>Actinidia deliciosa</i>	f430	10	14-4984-01	CG7	
rApi g 1.01 PR-10, Celery	<i>Apium graveolens</i>	f417	10	14-4957-01	CBR	
rMal d 1 PR-10, Apple	<i>Malus domestica</i>	f434	10	14-5703-01	CWR	
rMal d 3 LTP, Apple	<i>Malus domestica</i>	f435	10	14-5704-01	CWS	
rPru p 1 PR-10, Peach	<i>Prunus persica</i>	f419	10	14-4960-01	CBV	
rPru p 3 LTP, Peach	<i>Prunus persica</i>	f420	10	14-4961-01	CBW	
rPru p 4 Proflin, Peach	<i>Prunus persica</i>	f421	10	14-4962-01	CBX	
Allergens for research use only						
Cranberry	<i>Vaccinium oxycoccus</i>	Rf341	10	14-5269-10	AKT	

Foods – Seed, legumes & nuts

Product description		Code	Size	Art. No.	Barcode
Almond	<i>Amygdalus communis</i>	f20	16	14-4179-01	422
Barley	<i>Hordeum vulgare</i>	f6	16	14-4172-01	415
Blue vetch	<i>Lathyrus sativus</i>	f310	10	14-5197-01	C3A
Brazil nut	<i>Bertholletia excelsa</i>	f18	16	14-4178-01	421
Buckwheat	<i>Fagopyrum esculentum</i>	f11	16	14-4125-01	374
Cashew nut	<i>Anacardium occidentale</i>	f202	10	14-4835-01	997
Chick pea	<i>Cicer arietinus</i>	f309	10	14-5196-01	BTS
Coconut	<i>Cocos nucifera</i>	f36	16	14-4212-01	453
Common millet	<i>Panicum milliaceum</i>	f55	16	14-4459-01	813
Fenugreek	<i>Trigonella foenum-graecum</i>	f305	10	14-5187-01	C3D
Foxtail millet	<i>Setaria italica</i>	f56	16	14-4460-01	824
Gluten		f79	10	14-4291-01	525
Green bean	<i>Phaseolus vulgaris</i>	f315	10	14-5211-01	BSM
Hazel nut	<i>Corylus avellana</i>	f17	16	14-4528-01	D2F
Japanese millet	<i>Echinochloa crus-galli</i>	f57	16	14-4461-01	825
Lentil	<i>Lens esculenta</i>	f235	10	14-4815-01	914
Lima bean	<i>Phaseolus lunatus</i>	f182	10	14-4929-01	CC3
Linseed	<i>Linum usitatissimum</i>	f333	10	14-5250-01	C13
Lupin seed	<i>Lupinus albus</i>	f335	10	14-5254-01	BST
Macadamia nut	<i>Macadamia spp.</i>	f345	10	14-5282-01	BTX
Maize, Corn	<i>Zea mays</i>	f8	16	14-4124-01	373
Oat	<i>Avena sativa</i>	f7	16	14-4173-01	416
Pea	<i>Pisum sativum</i>	f12	16	14-4176-01	419
Peanut	<i>Arachis hypogaea</i>	f13	16	14-4126-01	375
Pecan nut	<i>Carya illinoensis</i>	f201	10	14-4807-01	906
Pine nut, pignoles	<i>Pinus edulis</i>	f253	10	14-5093-01	BS3
Pistachio	<i>Pistacia vera</i>	f203	10	14-4836-01	998
Poppy seed	<i>Papaver somniferum</i>	f224	10	14-5097-01	BS1
Pumpkin seed	<i>Cucurbita pepo</i>	f226	10	14-5098-01	C1U
Quinoa	<i>Chenopodium quinoa</i>	f347	10	14-5284-01	C1T
Rape seed	<i>Brassica napus</i>	f316	10	14-5213-01	C10
Red kidney bean	<i>Phaseolus vulgaris</i>	f287	10	14-5100-01	BSE
Rice	<i>Oryza sativa</i>	f9	16	14-4174-01	417
Rye	<i>Secale cereale</i>	f5	16	14-4123-01	372
Sesame seed	<i>Sesamum indicum</i>	f10	16	14-4175-01	418
Soybean	<i>Glycine max</i>	f14	16	14-4115-01	364
Spelt wheat	<i>Triticum spelta</i>	f124	10	14-4914-01	BY6
Sugar-beet seed	<i>Beta vulgaris</i>	f227	10	14-5102-01	BTK
Sweet chestnut	<i>Castanea sativa</i>	f299	10	14-4843-01	AAF
Walnut	<i>Juglans spp.</i>	f256	16	14-4521-01	CME
Wheat	<i>Triticum aestivum</i>	f4	16	14-4113-01	363
White bean	<i>Phaseolus vulgaris</i>	f15	16	14-4177-01	420
Allergen components					
rAna o 3 Cashew nut	<i>Anacardium occidentale</i>	f443	10	14-5760-01	D0W
rAra h 1 Peanut	<i>Arachis hypogaea</i>	f422	10	14-4963-01	CDF
rAra h 2 Peanut	<i>Arachis hypogaea</i>	f423	10	14-4964-01	CDG
rAra h 3 Peanut	<i>Arachis hypogaea</i>	f424	10	14-4965-01	CDH
rAra h 8 PR-10, Peanut	<i>Arachis hypogaea</i>	f352	10	14-5341-01	CEZ
rAra h 9 LTP, Peanut	<i>Arachis hypogaea</i>	f427	10	14-4980-01	CFC
rBer e 1 Brazil nut	<i>Bertholletia excelsa</i>	f354	10	14-5343-01	CDS
rCor a 1 PR-10, Hazel nut	<i>Corylus avellana</i>	f428	10	14-4981-01	CFB
rCor a 8 LTP, Hazel nut	<i>Corylus avellana</i>	f425	10	14-4968-01	CDP
nCor a 9, Hazel nut	<i>Corylus avellana</i>	f440	10	14-5758-01	D0M
rCor a 14, Hazel nut	<i>Corylus avellana</i>	f439	10	14-5754-01	CZP
rGly m 4 PR-10, Soy	<i>Glycine max</i>	f353	10	14-5340-01	CDR
nGly m 5 beta-conglycinin, Soy	<i>Glycine max</i>	f431	10	14-4990-01	CLV
nGly m 6 Glycinin	<i>Glycine max</i>	f432	10	14-4991-01	CLU
rJug r 1 Walnut	<i>Juglans regia</i>	f441	10	14-5762-01	D0T
rJug r 3 LTP, Walnut	<i>Juglans regia</i>	f442	10	14-5954-01	D11
rTri a 14 LTP, Wheat	<i>Triticum aestivum</i>	f433	10	14-5701-01	CN6
rTri a 19 Omega-5 Gliadin, Wheat	<i>Triticum spp.</i>	f416	10	14-4954-01	C8H
Gliadin		f98	10	14-5752-01	CXG

Foods – Spices

Product description		Code	Size	Art. No.	Barcode
Allspice	<i>Pimenta dioica</i>	f339	10	14-5267-01	C17
Anise	<i>Pimpinella anisum</i>	f271	10	14-5044-01	BP9
Basil	<i>Ocimum basilicum</i>	f269	10	14-5048-01	BS7
Bay leaf	<i>Laurus nobilis</i>	f278	10	14-5049-01	BSC
Black pepper	<i>Piper nigrum</i>	f280	10	14-4817-01	916
Caraway	<i>Carum carvi</i>	f265	10	14-5057-01	BP8
Cardamon	<i>Elettaria cardamomum</i>	f267	10	14-5058-01	C2G
Chilipepper	<i>Capsicum frutescens</i>	f279	10	14-5062-01	BSD
Clove	<i>Syzygium aromaticum</i>	f268	10	14-5064-01	BS6
Coriander	<i>Coriandrum sativum</i>	f317	10	14-5214-01	BSN
Curry (Santa Maria)		f281	10	14-5067-01	BPA
Dill	<i>Anethum graveolens</i>	f277	10	14-5069-01	C0S
Fennel seed	<i>Foeniculum vulgare</i>	f219	10	14-5070-01	C1L
Ginger	<i>Zingiber officinale</i>	f270	10	14-5072-01	BS8
Green pepper (unripe seed)	<i>Piper nigrum</i>	f263	10	14-5075-01	BS5
Lovage	<i>Levisticum officinale</i>	f275	10	14-5082-01	C2Z
Mace	<i>Myristica fragrans</i>	f266	10	14-5083-01	C2X
Marjoram	<i>Origanum majorana</i>	f274	10	14-5084-01	BSB
Mint	<i>Mentha piperita</i>	f332	10	14-5249-01	C1G
Mustard	<i>Brassica/Sinapis spp.</i>	f89	10	14-4329-01	557
Oregano	<i>Origanum vulgare</i>	f283	10	14-5088-01	BTJ
Paprika, Sweet pepper	<i>Capsicum annuum</i>	f218	10	14-4816-01	915
Parsley	<i>Petroselinum crispum</i>	f86	10	14-4297-01	531
Saffron	<i>Crocus sativus</i>	f331	10	14-5248-01	C2E
Sage	<i>Salvia officinalis</i>	f344	10	14-5281-01	C25
Tarragon	<i>Artemisia dracunculus</i>	f272	10	14-5103-01	BS9
Thyme	<i>Thymus vulgaris</i>	f273	10	14-5105-01	BSA
Vanilla	<i>Vanilla planifolia</i>	f234	10	14-5106-01	BS2
Allergens for research use only					
Cinnamon	<i>Cinnamomum spp.</i>	Rf220	10	14-5063-10	669
Nutmeg	<i>Myristica fragrans</i>	Rf282	10	14-5087-10	693

Foods – Fish, shellfish & mollusks

Product description		Code	Size	Art. No.	Barcode
Abalone	<i>Haliotis spp.</i>	f346	10	14-5283-01	BTY
Anchovy	<i>Engraulis encrasicolus</i>	f313	10	14-5209-01	BSL
Blue mussel	<i>Mytilus edulis</i>	f37	16	14-4213-01	454
Cat fish	<i>Ictalurus punctatus</i>	f369	10	14-4930-01	CC4
Chub mackerel	<i>Scomber japonicus</i>	f50	16	14-4454-01	812
Clam	<i>Ruditapes spp.</i>	f207	10	14-4820-01	919
Crab	<i>Chionoecetes spp.</i>	f23	16	14-4180-01	423
Crayfish	<i>Astacus astacus</i>	f320	10	14-5219-01	BSP
Eel	<i>Anguilla anguilla</i>	f264	10	14-5042-01	C26
Fish (cod)	<i>Gadus morhua</i>	f3	16	14-4159-01	404
Grouper	<i>Epinephelus spp.</i>	f410	10	14-4933-01	CC7
Gulf flounder	<i>Paralichthys albigutta</i>	f147	10	14-4928-01	CC2
Haddock	<i>Melanogrammus aeglefinus</i>	f42	10	14-4939-01	CCC
Hake	<i>Merluccius merluccius</i>	f307	10	14-5194-01	BTP
Halibut	<i>Hippoglossus hippoglossus</i>	f303	10	14-5158-01	BZX
Herring	<i>Clupea harengus</i>	f205	10	14-4837-01	999
Jack mackerel, Scad	<i>Trachurus japonicus</i>	f60	16	14-4464-01	827
Langust (spiny lobster)	<i>Palinurus spp.</i>	f304	10	14-5159-01	BTM
Lobster	<i>Homarus gammarus</i>	f80	10	14-4292-01	526
Mackerel	<i>Scomber scombrus</i>	f206	10	14-5019-01	BRY
Megrim	<i>Lepidorhombus whiffiagonis</i>	f311	10	14-5204-01	BSK
Octopus	<i>Octopus vulgaris</i>	f59	16	14-4463-01	826
Orange roughy	<i>Hoplostethus atlanticus</i>	f412	10	14-4935-01	CC8
Oyster	<i>Ostrea edulis</i>	f290	10	14-4842-01	AAE
Pacific squid	<i>Todarodes pacificus</i>	f58	16	14-4462-01	814
Plaice	<i>Pleuronectes platessa</i>	f254	16	14-4434-01	647
Pollock	<i>Pollachius virens</i>	f413	10	14-4936-01	CC9
Red snapper	<i>Lutjanus campechanus</i>	f381	10	14-4931-01	CC5
Salmon	<i>Salmo salar</i>	f41	16	14-4215-01	456
Sardine (Pilchard)	<i>Sardina pilchardus</i>	f308	10	14-5195-01	BTR
Sardine, Japanese Pilchard	<i>Sardinops melanosticta</i>	f61	16	14-4465-01	828
Scallop	<i>Pecten spp.</i>	f338	10	14-4895-01	BHN

Foods – Fish, shellfish & mollusks, cont'd

Product description		Code	Size	Art. No.	Barcode
Shrimp	<i>Pandalus borealis, Penaeus monodon, Metapenaeopsis barbata, Metapenaeus joyneri</i>	f24	16	14-4181-01	424
Snail	<i>Helix aspersa</i>	f314	10	14-5210-01	BU0
Sole	<i>Solea solea</i>	f337	10	14-5256-01	BTV
Squid	<i>Loligo spp.</i>	f258	10	14-5142-01	BS4
Swordfish	<i>Xiphias gladius</i>	f312	10	14-5205-01	C08
Tilapia	<i>Oreochromis spp.</i>	f414	10	14-4937-01	CCA
Trout	<i>Oncorhynchus mykiss (Salmo gairdneri)</i>	f204	10	14-4819-01	918
Tuna	<i>Thunnus albacares</i>	f40	16	14-4214-01	455
Walleye pike	<i>Sander vitreus (Stizostedion vitreum)</i>	f415	10	14-4938-01	CCB
Whitefish (Inconnu)	<i>Stenodus spp.</i>	f384	10	14-4932-01	CC6
Allergen components					
rCyp c 1 Carp	<i>Cyprinus carpio</i>	f355	10	14-5344-01	CF0
rGad c 1 Cod	<i>Gadus morhua</i>	f426	10	14-4971-01	CEY
rPen a 1 Tropomyosin, Shrimp		f351	10	14-5335-01	C11

Foods – Egg & fowl

Product description		Code	Size	Art. No.	Barcode
Chicken	<i>Gallus spp.</i>	f83	16	14-4185-01	428
Egg		f245	10	14-4826-01	925
Egg white		f1	16	14-4111-01	361
Egg yolk		f75	16	14-4184-01	427
Turkey meat	<i>Meleagris gallopavo</i>	f284	10	14-4818-01	917
Allergen components					
nGal d 1 Ovomuroid, Egg		f233	10	14-4805-01	904
nGal d 2 Ovalbumin, Egg		f232	10	14-4804-01	903
nGal d 3 Conalbumin, Egg		f323	10	14-5222-01	C18

Foods – Meat

Product description		Code	Size	Art. No.	Barcode
Beef	<i>Bos spp.</i>	f27	16	14-4209-01	450
Elk/moose meat		f285	10	14-5115-01	C3E
Horse meat		f321	10	14-5220-01	C1D
Mutton	<i>Ovis spp.</i>	f88	10	14-4299-01	533
Pork	<i>Sus spp.</i>	f26	16	14-4183-01	426
Rabbit	<i>Oryctolagus spp.</i>	f213	10	14-4838-01	AAA

Foods – Milk

Product description	Code	Size	Art. No.	Barcode
Cheese, cheddar type	f81	10	14-4293-01	527
Cheese, mold type	f82	10	14-4294-01	528
Cow's whey	f236	10	14-5114-01	BP6
Goat milk	f300	10	14-5144-01	BSJ
Mare's milk	f286	10	14-5109-01	C2K
Milk	f2	16	14-4112-01	362
Milk, boiled	f231	10	14-4806-01	905
Sheep milk	f325	10	14-5237-01	C0C
Sheep whey	f326	10	14-5238-01	C2U
Allergen components				
nBos d 4 alpha-lactalbumin, Milk	f76	10	14-4522-01	CTP
nBos d 5 beta-lactoglobulin, Milk	f77	10	14-4523-01	CTR
nBos d 8 Casein, Milk	f78	10	14-4524-01	CTS

Foods – Additives

Product description		Code	Size	Art. No.	Barcode
Carob (E410)	<i>Ceratonia siliqua</i>	f296	10	14-5137-01	C0U
Guar, guar gum (E412)	<i>Cyamopsis tetragonolobus</i>	f246	10	14-5076-01	C0H
Gum arabic (E414)	<i>Acacia spp.</i>	f297	10	14-5138-01	BSH
Tragacanth (E413)	<i>Astragalus spp.</i>	f298	10	14-5139-01	C12
Cochineal extract (Carmine red) (E120)	<i>Dactylopius coccus</i>	f340	10	14-5268-01	C0V

Foods – Miscellaneous

Product description		Code	Size	Art. No.	Barcode
Cacao	<i>Theobroma cacao</i>	f93	10	14-4335-01	562
Coffee	<i>Coffea spp.</i>	f221	10	14-5065-01	BRZ
Honey		f247	10	14-5078-01	BP7
Hop (fruit cone)	<i>Humulus lupulus</i>	f324	10	14-5228-01	C0N
Malt		f90	10	14-4330-01	558
Mushroom (champignon)	<i>Agaricus hortensis</i>	f212	10	14-5086-01	BTH
Tea	<i>Camellia sinensis</i>	f222	10	14-5104-01	BS0
Yeast	<i>Saccharomyces cerevisiae</i>	f45	16	14-4217-01	458

Food – Mixes

Product description	Code	Size	Art. No.	Barcode
f13, f17, f18, f20, f36 Peanut, Hazel nut, Brazil nut, Almond, Coconut	fx1	16	14-4206-01	447
f3, f24, f37, f40, f41 Fish, Shrimp, Blue mussel, Tuna, Salmon	fx2	16	14-4207-01	448
f4, f7, f8, f10, f11 Wheat, Oat, Maize, Sesame seed, Buckwheat	fx3	16	14-4208-01	449
f1, f2, f3, f4, f13, f14 Egg white, Milk, Fish, Wheat, Peanut, Soybean	fx5	16	14-4275-01	513
f25, f45, f47, f48, f85 Tomato, Yeast, Garlic, Onion, Celery	fx7	10	14-4844-01	AAG
f17, f18, f33, f49, f93 Hazel nut, Brazil nut, Orange, Apple, Cacao	fx8	10	14-4845-01	AAH
f20, f84, f87, f92, f259 Almond, Kiwi, Melon, Banana, Grape	fx9	10	14-4846-01	AAJ
f8, f12, f15, f31, f260 Maize, Pea, White bean, Carrot, Broccoli	fx11	10	14-5177-01	BPC
f5, f9, f35, f212, f225 Rye, Rice, Potato, Mushroom, Pumpkin	fx12	10	14-5178-01	BPD
f12, f15, f31, f35 Pea, White bean, Carrot, Potato	fx13	10	14-4848-01	AAL
f25, f214, f216, f218 Tomato, Spinach, Cabbage, Paprika	fx14	10	14-4849-01	AAM
f33, f49, f92, f95 Orange, Apple, Banana, Peach	fx15	10	14-4850-01	AAN
f44, f94, f208, f210 Strawberry, Pear, Lemon, Pineapple	fx16	10	14-4851-01	AAP
f49, f92, f94, f95 Apple, Banana, Pear, Peach	fx17	10	14-5179-01	BPE
f12, f13, f14 Pea, Peanut, Soybean	fx18	10	14-4852-01	AAR
f31, f35, f214, f244 Carrot, Potato, Spinach, Cucumber	fx19	10	14-5181-01	BPF
f4, f5, f6, f9 Wheat, Rye, Barley, Rice	fx20	10	14-4853-01	AAS
f84, f87, f92, f95, f210 Kiwi, Melon, Banana, Peach, Pineapple	fx21	10	14-5206-01	BPG
f201, f202, f203, f256 Pecan nut, Cashew nut, Pistachio, Walnut	fx22	10	14-5212-01	BPH
f17, f24, f84, f92 Hazel nut, Shrimp, Kiwi, Banana	fx24	10	14-4856-01	A7F
f10, f45, f47, f85 Sesame seed, Yeast, Garlic, Celery	fx25	10	14-4857-01	A7G
f1, f2, f13, f89 Egg white, Cow's milk, Peanut, Mustard	fx26	10	14-4894-01	BEX
f3, f4, f14, f17 Fish (cod), Wheat, Soybean, Hazel nut	fx27	10	14-4893-01	BEW
f10, f24, f27, f84 Sesame seed, Shrimp, Beef, Kiwi	fx28	10	14-4892-01	BEV
f33, f208, f209, f302 Orange, Lemon, Grapefruit, Mandarin	fx29	10	14-4915-01	BY7
f84, f91, f92, f96, f293 Kiwi, Mango, Banana, Avocado, Papaya	fx30	10	14-4916-01	BY8
f49, f94, f95, f242, f255 Apple, Pear, Peach, Cherry, Plum	fx31	10	14-4917-01	BY9
f235, f12, f15, f296 Lentil, Pea, White bean, Carob	fx32	10	14-4918-01	BYA
f272, f274, f273, f275 Tarragon, Marjoram, Thyme, Lovage	fx70	10	14-4357-01	582
f265, f266, f267, f268 Caraway, Mace, Cardamom, Clove	fx71	10	14-4358-01	583
f269, f219, f270, f271 Basil, Fennel seed, Ginger, Anise	fx72	10	14-4359-01	584
f26, f27, f83 Pork, Beef, Chicken	fx73	10	14-4825-01	924
f3, f205, f206, f254 Cod, Herring, Mackerel, Plaice	fx74	10	14-4827-01	926
f10, f17, f25, f84, f202 Sesame seed, Hazel nut, Tomato, Kiwi, Cashew nut	fx77	16	14-4988-01	CJ5

IgG Antigens				
Product description	Code	Size	Art. No.	Barcode
Microorganisms				
<i>Micropolyspora faeni</i>	Gm22	10	14-5302-01	BT9
<i>Stachybotrys atra</i>	Gm24	10	14-5304-01	BTB
<i>Thermoactinomyces vulgaris</i>	Gm23	10	14-5303-01	BTA
Epidermals and animal proteins				
Budgerigar serum proteins, feathers and droppings	Ge90	10	14-5316-01	BU4
Parrot serum proteins, feathers and droppings	Ge92	10	14-5317-01	BU5
Pigeon serum proteins	Ge93	10	14-5337-01	BU9
Pigeon serum proteins, feathers and droppings	Ge91	10	14-5315-01	BU3
Mixes				
m1, Gm2, m4, Gm6	Gmx6	10	14-5319-01	BU7
<i>Penicillium chrysogenum</i> , <i>Cladosporium herbarum</i> (<i>Hormodendrum</i>), <i>Mucor racemosus</i> , <i>Alternaria alternata</i>				
Gm22, Gm23	Gmx7	10	14-5318-01	BU6
<i>Micropolyspora faeni</i> , <i>Thermoactinomyces vulgaris</i>				

ImmunoCAP Rapid

ImmunoCAP Rapid is a point-of-care test for *in vitro* qualitative determination of allergen-specific IgE in human capillary blood or heparinized whole venous blood.

ImmunoCAP Rapid offers a comprehensive solution from capillary blood sampling to the evaluation of test results, including all necessary equipment such as Blood Sampling Device, Assay Device and Developer Solution in each package. The Assay Device, with a symptom-oriented allergen profile, is a single use, disposable test device. It contains all the allergens to be tested and the necessary reagents for the reaction to occur.

Ten allergens are included in each Assay Device. Results are read visually within 20 minutes. A pink-red line next to the allergen code indicates presence of specific IgE antibodies to that particular allergen. ImmunoCAP Rapid gives results directly – clear and simple.



ImmunoCAP Rapid

Product	Size	Art. No.
ImmunoCAP Rapid Wheeze/Rhinitis Child	10	82-1000-01
ImmunoCAP Rapid Asthma/Rhinitis Adult	10	82-1001-01

Immuno Solid-phase Allergen Chip

ImmunoCAP ISAC is a miniaturized immunoassay platform that allows for simultaneous measurement of specific IgE antibodies to 112 different allergen components using only 30 µl of serum or plasma. Capillary blood sampling can be used, thus enabling a less invasive procedure for testing young children. Purified natural or recombinant molecular allergen components are immobilized on a solid support (biochip). In a two step assay, antibodies from the patient serum bind to the immobilized allergen components; and after a washing step, allergen-bound antibodies are detected by a fluorescence-labeled antibody. ImmunoCAP ISAC is a semi-quantitative test. Results are reported in ISAC Standardized Units (ISU).



ImmunoCAP ISAC

Product	Size	Art. No.
ImmunoCAP ISAC Starter Pack	1	81-1010-01
Washing dish, 2 dishes, 10 chips each,		
Humidity chamber, 1 chamber for 26 chips,		
Magnetic stir bar, 2		
ImmunoCAP ISAC sIgE 112	20	81-1011-01
Specific IgE Control	1 x 1	81-1015-01
IgE Detection Antibody	1 x 1	81-1016-01

ImmunoCAP ISAC sIgE 112 Allergen Components

Allergen component	Allergen source COMMON NAME	LATIN NAME	PROTEIN GROUP
Food Allergens			
nGal d 1	Egg white	<i>Gallus domesticus</i>	Ovomucoid
nGal d 2	Egg white	<i>Gallus domesticus</i>	Ovalbumin
nGal d 3	Egg white	<i>Gallus domesticus</i>	Conalbumin/Ovotransferrin
nGal d 5	Egg yolk/chicken meat	<i>Gallus domesticus</i>	Livetin/Serum albumin
nBos d 4	Cow's milk	<i>Bos domesticus</i>	Alpha-lactalbumin
nBos d 5	Cow's milk	<i>Bos domesticus</i>	Beta-lactoglobulin
nBos d 6	Cow's milk and meat	<i>Bos domesticus</i>	Serum albumin
nBos d 8	Cow's milk	<i>Bos domesticus</i>	Casein
nBos d lactoferrin	Cow's milk	<i>Bos domesticus</i>	Transferrin
rGad c 1	Cod	<i>Gadus callarias</i>	Parvalbumin
nPen m 1	Shrimp	<i>Penaeus monodon</i>	Tropomyosin
nPen m 2	Shrimp	<i>Penaeus monodon</i>	Arginine kinase
nPen m 4	Shrimp	<i>Penaeus monodon</i>	Sarcoplasmic Ca-binding protein
rAna o 2	Cashew nut	<i>Anacardium occidentale</i>	Storage protein, 11S globulin
rBer e 1	Brazil nut	<i>Bertholletia excelsa</i>	Storage protein, 2S albumin
rCor a 1.0401	Hazelnut	<i>Corylus avellana</i>	PR-10 protein
rCor a 8	Hazelnut	<i>Corylus avellana</i>	Lipid transfer protein (nsLTP)
nCor a 9	Hazelnut	<i>Corylus avellana</i>	Storage protein, 11S globulin
rJug r 1	Walnut	<i>Juglans regia</i>	Storage protein, 2S albumin
nJug r 2	Walnut	<i>Juglans regia</i>	Storage protein, 7S globulin
nJug r 3	Walnut	<i>Juglans regia</i>	Lipid transfer protein (nsLTP)
nSes i 1	Sesame seed	<i>Sesamum indicum</i>	Storage protein, 2S albumin

ImmunoCAP ISAC sIgE 112 Allergen Components, cont'd

Allergen component	Allergen source COMMON NAME	LATIN NAME	PROTEIN GROUP
Food Allergens			
rAra h 1	Peanut	<i>Arachis hypogaea</i>	Storage protein, 7S globulin
rAra h 2	Peanut	<i>Arachis hypogaea</i>	Storage protein, 2S albumin
rAra h 3	Peanut	<i>Arachis hypogaea</i>	Storage protein, 11S globulin
nAra h 6	Peanut	<i>Arachis hypogaea</i>	Storage protein, 2S albumin
rAra h 8	Peanut	<i>Arachis hypogaea</i>	PR-10 protein
rAra h 9	Peanut	<i>Arachis hypogaea</i>	Lipid transfer protein (nsLTP)
rGly m 4	Soybean	<i>Glycine max</i>	PR-10 protein
nGly m 5	Soybean	<i>Glycine max</i>	Storage protein, Beta-conglycinin
nGly m 6	Soybean	<i>Glycine max</i>	Storage protein, Glycinin
nFag e 2	Buckwheat	<i>Fagopyrum esculentum</i>	Storage protein, 2S albumin
rTri a 14	Wheat	<i>Triticum aestivum</i>	Lipid transfer protein (nsLTP)
rTri a 19.0101	Wheat	<i>Triticum aestivum</i>	Omega-5 gliadin
nTri a aA_Tl	Wheat	<i>Triticum aestivum</i>	Alpha-amylase/Trypsin inhibitor
nAct d 1	Kiwi	<i>Actinidia deliciosa</i>	
nAct d 2	Kiwi	<i>Actinidia deliciosa</i>	Thaumatococcal protein
nAct d 5	Kiwi	<i>Actinidia deliciosa</i>	
rAct d 8	Kiwi	<i>Actinidia deliciosa</i>	PR-10 protein
rApi g 1	Celery	<i>Apium graveolens</i>	PR-10 protein
rMal d 1	Apple	<i>Malus domestica</i>	PR-10 protein
rPru p 1	Peach	<i>Prunus persica</i>	PR-10 protein
rPru p 3	Peach	<i>Prunus persica</i>	Lipid transfer protein (nsLTP)
Aeroallergens			
nCyn d 1	Bermuda grass	<i>Cynodon dactylon</i>	Grass group 1
rPhl p 1	Timothy	<i>Phleum pratense</i>	Grass group 1
rPhl p 2	Timothy	<i>Phleum pratense</i>	Grass group 2
nPhl p 4	Timothy	<i>Phleum pratense</i>	
rPhl p 5b	Timothy	<i>Phleum pratense</i>	Grass group 5
rPhl p 6	Timothy	<i>Phleum pratense</i>	
rPhl p 7	Timothy	<i>Phleum pratense</i>	Polcalcin
rPhl p 11	Timothy	<i>Phleum pratense</i>	
rPhl p 12	Timothy	<i>Phleum pratense</i>	Profilin
rAln g 1	Alder	<i>Alnus glutinosa</i>	PR-10 protein
rBet v 1	Birch	<i>Betula verrucosa</i>	PR-10 protein
rBet v 2	Birch	<i>Betula verrucosa</i>	Profilin
rBet v 4	Birch	<i>Betula verrucosa</i>	Polcalcin
rCor a 1.0101	Hazel pollen	<i>Corylus avellana</i>	PR-10 protein
nCry j 1	Japanese cedar	<i>Cryptomeria japonica</i>	
nCup a 1	Cypress	<i>Cupressus arizonica</i>	
rOle e 1	Olive	<i>Olea europaea</i>	
nOle e 7	Olive	<i>Olea europaea</i>	Lipid transfer protein (nsLTP)
rOle e 9	Olive	<i>Olea europaea</i>	
rPla a 1	Plane tree	<i>Platanus acerifolia</i>	
nPla a 2	Plane tree	<i>Platanus acerifolia</i>	
rPla a 3	Plane tree	<i>Platanus acerifolia</i>	Lipid transfer protein (nsLTP)
nAmb a 1	Ragweed	<i>Ambrosia artemisiifolia</i>	
nArt v 1	Mugwort	<i>Artemisia vulgaris</i>	
nArt v 3	Mugwort	<i>Artemisia vulgaris</i>	Lipid transfer protein (nsLTP)
rChe a 1	Goosefoot	<i>Chenopodium album</i>	
rMer a 1	Annual mercury	<i>Mercurialis annua</i>	Profilin
rPar j 2	Wall pellitory	<i>Parietaria judaica</i>	Lipid transfer protein (nsLTP)
rPla l 1	Plantain (English)	<i>Plantago lanceolata</i>	
nSal k 1	Saltwort	<i>Salsola kali</i>	

ImmunoCAP ISAC sIgE 112 Allergen Components, cont'd

Allergen component	Allergen source COMMON NAME	LATIN NAME	PROTEIN GROUP
Aeroallergens			
rCan f 1	Dog	<i>Canis familiaris</i>	Lipocalin
rCan f 2	Dog	<i>Canis familiaris</i>	Lipocalin
nCan f 3	Dog	<i>Canis familiaris</i>	Serum albumin
rCan f 5	Dog	<i>Canis familiaris</i>	Arginine esterase
rEqu c 1	Horse	<i>Equus caballus</i>	Lipocalin
nEqu c 3	Horse	<i>Equus caballus</i>	Serum albumin
rFel d 1	Cat	<i>Felis domesticus</i>	Uteroglobin
rFel d 2	Cat	<i>Felis domesticus</i>	Serum albumin
rFel d 4	Cat	<i>Felis domesticus</i>	Lipocalin
nMus m 1	Mouse	<i>Mus musculus</i>	Lipocalin
rAlt a 1	Alternaria	<i>Alternaria alternata</i>	
rAlt a 6	Alternaria	<i>Alternaria alternata</i>	Enolase
rAsp f 1	Aspergillus	<i>Aspergillus fumigatus</i>	
rAsp f 3	Aspergillus	<i>Aspergillus fumigatus</i>	
rAsp f 6	Aspergillus	<i>Aspergillus fumigatus</i>	Mn superoxide dismutase
rCla h 8	Cladosporium	<i>Cladosporium herbarum</i>	
rBlo t 5	House dust mite	<i>Blomia tropicalis</i>	
nDer f 1	House dust mite	<i>Dermatophagoides farinae</i>	
rDer f 2	House dust mite	<i>Dermatophagoides farinae</i>	
nDer p 1	House dust mite	<i>Dermatophagoides pteronyssinus</i>	
rDer p 2	House dust mite	<i>Dermatophagoides pteronyssinus</i>	
rDer p 10	House dust mite	<i>Dermatophagoides pteronyssinus</i>	Tropomyosin
rLep d 2	Storage mite	<i>Lepidoglyphus destructor</i>	
rBla g 1	Cockroach	<i>Blattella germanica</i>	
rBla g 2	Cockroach	<i>Blattella germanica</i>	
rBla g 5	Cockroach	<i>Blattella germanica</i>	
nBla g 7	Cockroach	<i>Blattella germanica</i>	Tropomyosin
Other			
rApi m 1	Honey bee venom	<i>Apis mellifera</i>	Phospholipase A2
nApi m 4	Honey bee venom	<i>Apis mellifera</i>	Melittin
rPol d 5	Paper wasp venom	<i>Polistes dominulus</i>	Venom, Antigen 5
rVes v 5	Common wasp venom	<i>Vespula vulgaris</i>	Venom, Antigen 5
rAni s 1	Anisakis	<i>Anisakis simplex</i>	Serine protease inhibitor
rAni s 3	Anisakis	<i>Anisakis simplex</i>	Tropomyosin
rHev b 1	Latex	<i>Hevea brasiliensis</i>	
rHev b 3	Latex	<i>Hevea brasiliensis</i>	
rHev b 5	Latex	<i>Hevea brasiliensis</i>	
rHev b 6.01	Latex	<i>Hevea brasiliensis</i>	
rHev b 8	Latex	<i>Hevea brasiliensis</i>	Profilin
nMUXF3	Sugar epitope from Bromelain		CCD-marker



ELIA

ELIA is an enzyme immunoassay to measure autoantibodies as an aid in the diagnosis of autoimmune diseases such as rheumatoid arthritis, celiac disease or systemic lupus erythematosus. ELIA runs on the fully automated systems Phadia 100, Phadia 250, Phadia 2500 and Phadia 5000 and makes the measurement of a broad panel of autoantibodies easy, reliable and economic.

ELIA Tests for Diagnostic Use

Product	Art. No.	Size	Antigen	Cut-Off			Short name
				Negative	Equivocal	Positive	
Connective Tissue Diseases							
ELIA CTD Screen Well	14-5596-01	4 x 12	human recombinant U1RNP (RNP70, A, C), SS-A/Ro (60 kDa, 52 kDa), SS-B/La, centromere B, Scl-70, Jo-1, fibrillarin, RNA Pol III, Rib-P, PM-Scl, PCNA, Mi-2 proteins, Sm proteins and native purified DNA	< 0.7 Ratio	0.7-1.0 Ratio	> 1.0 Ratio	ctd
ELIA Symphony Well	14-5508-01	4 x 12	human recombinant U1RNP (RNP70, A, C), SS-A/Ro (60 kDa, 52 kDa), SS-B/La, centromere B, Scl-70 and Jo-1 proteins, native purified Sm proteins	< 0.7 Ratio	0.7-1.0 Ratio	> 1.0 Ratio	sy
ELIA dsDNA Well	14-5500-01	4 x 12	double-stranded plasmid DNA	< 10 IU/ml	10-15 IU/ml	> 15 IU/ml	dn
ELIA ssDNA Well	14-5629-01	2 x 12	synthetic ssDNA	< 7 U/ml	7-10 U/ml	> 10 U/ml	sdn
ELIA U1RNP Well	14-5501-01	4 x 12	human recombinant U1RNP (RNP70, A, C) proteins	< 5 U/ml	5-10 U/ml	> 10 U/ml	rn
ELIA RNP70 Well	14-5511-01	4 x 12	human recombinant RNP70 protein	< 7 U/ml	7-10 U/ml	> 10 U/ml	70
ELIA Smd ^P Well	14-5624-01	4 x 12	synthetic Smd ₃ peptides	< 7 U/ml	7-10 U/ml	> 10 U/ml	smd
ELIA Ro Well	14-5503-01	4 x 12	human recombinant SS-A/Ro (60 kDa, 52 kDa) proteins	< 7 U/ml	7-10 U/ml	> 10 U/ml	ro
ELIA Ro52 Well	14-5598-01	2 x 12	human recombinant SS-A/Ro (52 kDa) protein	< 7 U/ml	7-10 U/ml	> 10 U/ml	ro52
ELIA Ro60 Well	14-5525-01	4 x 12	human recombinant SS-A/Ro (60 kDa) protein	< 7 U/ml	7-10 U/ml	> 10 U/ml	ro60
ELIA La Well	14-5504-01	4 x 12	human recombinant SS-B/La protein	< 7 U/ml	7-10 U/ml	> 10 U/ml	la
ELIA CENP Well	14-5505-01	2 x 12	human recombinant centromere protein B	< 7 U/ml	7-10 U/ml	> 10 U/ml	ce
ELIA Scl-70 ^s Well	14-5637-01	2 x 12	human recombinant Scl-70 protein	< 7 U/ml	7-10 U/ml	> 10 U/ml	scs
ELIA RNA Pol III Well	14-5599-01	2 x 12	human recombinant RNA polymerase III protein	< 7 U/ml	7-10 U/ml	> 10 U/ml	pol3
ELIA Jo-1 Well	14-5507-01	2 x 12	human recombinant Jo-1 protein	< 7 U/ml	7-10 U/ml	> 10 U/ml	jo
ELIA Fibrillarin Well	14-5605-01	2 x 12	human recombinant fibrillarin protein	< 7 U/ml	7-10 U/ml	> 10 U/ml	fib
ELIA Rib-P Well	14-5521-01	2 x 12	human recombinant Rib-P proteins (P0, P1, P2)	< 7 U/ml	7-10 U/ml	> 10 U/ml	rp
ELIA PM-Scl Well	14-5602-01	2 x 12	human recombinant PM-Scl protein	< 7 U/ml	7-10 U/ml	> 10 U/ml	pmsc
ELIA PCNA Well	14-5603-01	2 x 12	human recombinant PCNA protein	< 7 U/ml	7-10 U/ml	> 10 U/ml	pcna
ELIA Mi-2 Well	14-5604-01	2 x 12	human recombinant Mi-2 protein	< 7 U/ml	7-10 U/ml	> 10 U/ml	mi
Rheumatoid Arthritis							
ELIA CCP Well	14-5515-01	4 x 12	citruilinated synthetic peptides, second generation antigen	< 7 U/ml	7-10 U/ml	> 10 U/ml	cp
ELIA CCP IgA Well	14-5615-01	2 x 12	citruilinated synthetic peptides, second generation antigen	< 7 U/ml	7-10 U/ml	> 10 U/ml	Acp
ELIA RF IgM Well	14-5600-01	4 x 12	aggregated rabbit IgG	< 3.5 IU/ml	3.5-5.0 IU/ml	> 5.0 IU/ml	Mrf
ELIA RF IgA Well	14-5601-01	4 x 12	aggregated rabbit IgG	< 14 IU/ml	14-20 IU/ml	> 20 IU/ml	Arf
ELIA RF IgG Well	14-5617-01	4 x 12	rabbit IgG	< 28 IU/ml	28-40 IU/ml	> 40 IU/ml	Grf

EliA Tests for Diagnostic Use

Product	Art. No.	Size	Antigen	Cut-Off			Short name
				Negative	Equivocal	Positive	
Anti-Phospholipid Syndrome							
EliA Cardiolipin IgG Well	14-5529-01	4 x 12	bovine cardiolipin and bovine β 2-glycoprotein I as co-factor	< 10 GPL-U/ml	10-40 GPL-U/ml*	>40 GPL-U/ml	Gcl
EliA Cardiolipin IgM Well	14-5530-01	4 x 12	bovine cardiolipin and bovine β 2-glycoprotein I as co-factor	< 10 MPL-U/ml	10-40 MPL-U/ml*	>40 MPL-U/ml	Mcl
EliA Cardiolipin IgA Well	14-5528-01	2 x 12	bovine cardiolipin and bovine β 2-glycoprotein I as co-factor	< 14 APL-U/ml	14-20 APL-U/ml	>20 APL-U/ml	Adl
EliA β 2-Glycoprotein I IgG Well	14-5532-01	4 x 12	human purified β 2-glycoprotein I antigen	< 7 U/ml	7-10 U/ml	> 10 U/ml	Gb2
EliA β 2-Glycoprotein I IgM Well	14-5533-01	4 x 12	human purified β 2-glycoprotein I antigen	< 7 U/ml	7-10 U/ml	> 10 U/ml	Mb2
EliA β 2-Glycoprotein I IgA Well	14-5531-01	2 x 12	human purified β 2-glycoprotein I antigen	< 7 U/ml	7-10 U/ml	> 10 U/ml	Ab2
Vasculitis and Goodpasture Syndrome							
EliA PR3 ^s Well	14-5536-01	4 x 12	human purified proteinase 3	< 2.0 IU/ml	2.0-3.0 IU/ml	> 3.0 IU/ml	prs
EliA MPO ^s Well	14-5537-01	4 x 12	human purified myeloperoxidase	< 3.5 IU/ml	3.5-5.0 IU/ml	> 5.0 IU/ml	mps
EliA GBM Well	14-5514-01	2 x 12	human recombinant α 3 chain of collagen IV	< 7 U/ml	7-10 U/ml	> 10 U/ml	gb
Gastrointestinal Diseases							
EliA Celikey IgA Well	14-5517-01	4 x 12	human recombinant tissue transglutaminase	< 7 U/ml	7-10 U/ml	> 10 U/ml	Acy
EliA Celikey IgG Well	14-5518-01	2 x 12	human recombinant tissue transglutaminase	< 7 U/ml	7-10 U/ml	> 10 U/ml	Gcy
EliA Gliadin IgA Well	14-5519-01	4 x 12	wheat gliadin antigen	< 7 U/ml	7-10 U/ml	> 10 U/ml	Agl
EliA Gliadin IgG Well	14-5520-01	4 x 12	wheat gliadin antigen	< 7 U/ml	7-10 U/ml	> 10 U/ml	Ggl
EliA Gliadin ^{pp} IgA Well	14-5538-01	4 x 12	synthetic deamidated gliadin peptides	< 7 U/ml	7-10 U/ml	> 10 U/ml	Agp
EliA Gliadin ^{pp} IgG Well	14-5539-01	4 x 12	synthetic deamidated gliadin peptides	< 7 U/ml	7-10 U/ml	> 10 U/ml	Ggp
EliA Calprotectin Well	14-5610-01	4 x 12	monoclonal antibodies to calprotectin	\leq 50 mg/kg	-	> 50 mg/kg	cn
EliA Calprotectin 2 Well	14-6748-01	4 x 16	monoclonal antibodies to calprotectin	\leq 50 mg/kg	-	> 50 mg/kg	cn2
EliA ASCA IgG Well	14-5635-01	4 x 12	mannan of <i>S. cerevisiae</i>	< 7 U/ml	7-10 U/ml	> 10 U/ml	Gsc
EliA ASCA IgA Well	14-5633-01	4 x 12	mannan of <i>S. cerevisiae</i>	< 7 U/ml	7-10 U/ml	> 10 U/ml	Asc
EliA Intrinsic Factor Well	14-5668-01	2 x 12	human gastric intrinsic factor	< 7 U/ml	7-10 U/ml	> 10 U/ml	inf
EliA Parietal Cell Well	14-5669-01	2 x 12	H ⁺ /K ⁺ ATPase of gastric cells	< 7 U/ml	7-10 U/ml	> 10 U/ml	par
Thyroid Diseases							
EliA anti-TG Well	14-5642-01	4 x 16	human protein (human thyroglobulin protein) thyroglobulin	< 40 IU/ml	40-60 IU/ml	> 60 IU/ml	thg
EliA anti-TPO Well	14-5641-01	4 x 16	human recombinant thyroid peroxidase	< 25 IU/ml	25-35 IU/ml	> 35 IU/ml	tpo
EliA anti-TSH-R Well	14-5639-01	4 x 16	human recombinant TSH receptor	< 2.9 IU/L	2.9-3.3 IU/L	> 3.3 IU/L	tsr
Liver Diseases							
EliA M2 Well	14-5649-01	4 x 12	native pyruvate dehydrogenase complex from mitochondria and human recombinant M2 protein	< 4 IU/ml	4-6 IU/ml	> 6 IU/ml	m2G
Immunodeficiency							
EliA Anti-IgA Well	14-5535-01	2 x 12	purified human IgA	< 7 U/ml	7-10 U/ml	> 10 U/ml	aiga

* Cut-off weak positive

Test Specific Reagents for EliA tests (Phadia 2500 / Phadia 5000)

Product	Size	Art. No.
EliA ANA Positive Control 2500/5000	6 x 2	83-1073-01
EliA CCP Positive Control 2500/5000	6 x 2	83-1076-01
EliA RF Positive Control 2500/5000	6 x 2	83-1087-01
EliA APS Positive Control 2500/5000	6 x 2	83-1078-01
EliA ANCA/GBM Positive Control 2500/5000	6 x 2	83-1075-01
EliA Celiac Positive Control 2500/5000	6 x 2	83-1077-01
EliA Calprotectin Positive Control 2500/5000	6 x 2	83-1084-01
EliA Calprotectin Negative Control 2500/5000	6 x 2	83-1086-01
EliA ASCA Positive Control 2500/5000	6 x 2	83-1108-01
EliA Thyroid Positive Control 2500/5000	6 x 2	83-1114-01
EliA M2 Positive Control 2500/5000	6 x 2	83-1105-01
EliA ssDNA Positive Control 2500/5000	6 x 2	83-1143-01
EliA IgG/IgM/IgA Negative Control 2500/5000	6 x 2	83-1074-01
EliA Gastric Positive Control 2500/5000	6 x 2	83-1146-01

Method Specific Reagents for EliA tests (Phadia 2500 / Phadia 5000)

Product	Size	Art. No.
EliA IgG Calibrator Well	4 x 12	14-5509-01
EliA IgG Calibrator Strips	5 x 1 curve	83-1015-01
EliA IgG Curve Control Strips	5 x 6 runs	83-1016-01
EliA IgG Conjugate 50	6 x 50	83-1017-01
EliA IgG Conjugate 200	6 x 200	83-1018-01
EliA IgA Calibrator Well	4 x 12	14-5516-01
EliA IgA Calibrator Strips	5 x 1 curve	83-1019-01
EliA IgA Curve Control Strips	5 x 6 runs	83-1020-01
EliA IgA Conjugate 50	6 x 50	83-1021-01
EliA IgA Conjugate 200	6 x 200	83-1022-01
EliA IgM Calibrator Well	4 x 12	14-5527-01
EliA IgM Calibrator Strips	5 x 1 curve	83-1052-01
EliA IgM Curve Control Strips	5 x 6 runs	83-1053-01
EliA IgM Conjugate 50	6 x 50	83-1051-01
EliA IgM Conjugate 200	6 x 200	83-1072-01
EliA Calprotectin Calibrator Well	4 x 12	14-5618-01
EliA Calprotectin Calibrator Strips	5 x 1 curve	83-1062-01
EliA Calprotectin Curve Control Strips	5 x 6 runs	83-1063-01
EliA Calprotectin Conjugate 50	6 x 50	83-1064-01
EliA Calprotectin Conjugate 200	6 x 200	83-1065-01
EliA Stool Extraction Kit	50 tubes	14-5638-01
EliA Calprotectin Extraction Buffer	6 x 23	83-1068-01
EliA Calprotectin 2 Calibrator Well	4 x 16	14-5667-01
EliA Calprotectin 2 Calibrator Strips	5 x 1 curve	83-1123-01
EliA Calprotectin 2 Curve Control Strips	5 x 6 runs	83-1129-01
EliA Calprotectin 2 Conjugate 50	6 x 50	83-1127-01
EliA Calprotectin 2 Conjugate 200	6 x 200	83-1128-01
EliA Stool Extraction Kit 2	50 tubes	14-5651-01
EliA Calprotectin 2 Extraction Buffer	6 x 15	83-1147-01
Faecal sample preparation kit	50 tubes	14-5619-01
EliA Sample Diluent	6 Bottles (400ml = 1350 samples)	83-1071-01

Test Specific Reagents for EliA tests (Phadia 250)

Product	Size	Art. No.
EliA ANA Positive Control 250	6 x 2	83-1033-01
EliA CCP Positive Control 250	6 x 2	83-1035-01
EliA RF Positive Control 250	6 x 2	83-1070-01
EliA APS Positive Control 250	6 x 2	83-1055-01
EliA ANCA/GBM Positive Control 250	6 x 2	83-1034-01
EliA Celiac Positive Control 250	6 x 2	83-1036-01
EliA Calprotectin Positive Control 250	6 x 2	83-1083-01
EliA Calprotectin Negative Control 250	6 x 2	83-1085-01
EliA ASCA Positive Control 250	6 x 2	83-1107-01
EliA Thyroid Positive Control 250	6 x 2	83-1113-01
EliA M2 Positive Control 250	6 x 2	83-1104-01
EliA Anti-IgA Positive Control 250	6 x 2	83-1080-01
EliA ssDNA Positive Control 250	6 x 2	83-1142-01
EliA IgG/IgM/IgA Negative Control 250	6 x 2	83-1037-01
EliA Gastric Positive Control 250	6 x 2	83-1145-01

Method Specific Reagents for EliA tests (Phadia 250)

Product	Size	Art. No.
EliA IgG Calibrator Well	4 x 12	14-5509-01
EliA IgG Calibrator Strips	5 x 1 curve	83-1015-01
EliA IgG Curve Control Strips	5 x 6 runs	83-1016-01
EliA IgG Conjugate 50	6 x 50	83-1017-01
EliA IgG Conjugate 200	6 x 200	83-1018-01
EliA IgA Calibrator Well	4 x 12	14-5516-01
EliA IgA Calibrator Strips	5 x 1 curve	83-1019-01
EliA IgA Curve Control Strips	5 x 6 runs	83-1020-01
EliA IgA Conjugate 50	6 x 50	83-1021-01
EliA IgA Conjugate 200	6 x 200	83-1022-01
EliA IgM Calibrator Well	4 x 12	14-5527-01
EliA IgM Calibrator Strips	5 x 1 curve	83-1052-01
EliA IgM Curve Control Strips	5 x 6 runs	83-1053-01
EliA IgM Conjugate 50	6 x 50	83-1051-01
EliA IgM Conjugate 200	6 x 200	83-1072-01
EliA Calprotectin Calibrator Well	4 x 12	14-5618-01
EliA Calprotectin Calibrator Strips	5 x 1 curve	83-1062-01
EliA Calprotectin Curve Control Strips	5 x 6 runs	83-1063-01
EliA Calprotectin Conjugate 50	6 x 50	83-1064-01
EliA Calprotectin Conjugate 200	6 x 200	83-1065-01
EliA Stool Extraction Kit	50 tubes	14-5638-01
EliA Calprotectin Extraction Buffer	6 x 24	83-1068-01
EliA Calprotectin 2 Calibrator Well	4 x 16	14-5667-01
EliA Calprotectin 2 Calibrator Strips	5 x 1 curve	83-1123-01
EliA Calprotectin 2 Curve Control Strips	5 x 6 runs	83-1129-01
EliA Calprotectin 2 Conjugate 50	6 x 50	83-1127-01
EliA Calprotectin 2 Conjugate 200	6 x 200	83-1128-01
EliA Stool Extraction Kit 2	50 tubes	14-5651-01
EliA Calprotectin 2 Extraction Buffer	6 x 15	83-1147-01
Faecal sample preparation kit	50 tubes	14-5619-01
EliA Sample Diluent	≥6 x 180	83-1023-01
EliA anti-TSH-R Sample Diluent	≥6 x 800	83-1121-01
	(6 bottles with 48 ml each)	
EliA anti-TSH-R Calibrator Strips	5 x 1 curve	83-1111-01
EliA anti-TSH-R Curve Control Strips	5 x 6 runs	83-1112-01
EliA anti-TSH-R Conjugate 50	6 x 50	83-1109-01
EliA anti-TSH-R Conjugate 200	6 x 200	83-1110-01

Test Specific Reagents for EliA tests (Phadia 100)

Product	Size	Art. No.
EliA Research Well	3 x 12	14-5526-01
EliA Research Starter Kit	Empty 2-litre bottle, EliA Research Software	83-1032-01
EliA ANA Positive Control 100	6 x 2	83-1038-01
EliA CCP Positive Control 100	6 x 2	83-1040-01
EliA RF Positive Control 100	6 x 2	83-1069-01
EliA APS Positive Control 100	6 x 2	83-1054-01
EliA ANCA/GBM Positive Control 100	6 x 2	83-1039-01
EliA Celiac Positive Control 100	6 x 2	83-1041-01
EliA Calprotectin Positive Control 100	6 x 2	83-1066-01
EliA Calprotectin Negative Control 100	6 x 2	83-1067-01
EliA ASCA Positive Control 100	6 x 2	83-1106-01
EliA M2 Positive Control 100	6 x 2	83-1103-01
EliA Anti-IgA Positive Control 100	6 x 2	83-1079-01
EliA ssDNA Positive Control 100	6 x 2	83-1141-01
EliA IgG/IgM/IgA Negative Control 100	6 x 2	83-1042-01

Method Specific Reagents for EliA tests (Phadia 100)

Product	Size	Art. No.
EliA IgG Calibrator Well	4 x 12	14-5509-01
EliA IgG Calibrators	1 curve	83-1000-01
EliA IgG Curve Control	6 runs	83-1001-01
EliA IgG Conjugate	2 x 48	83-1005-01
EliA IgG Conjugate	6 x 48	83-1002-01
EliA IgA Calibrator Well	4 x 12	14-5516-01
EliA IgA Calibrators	1 curve	83-1013-01
EliA IgA Curve Control	6 runs	83-1010-01
EliA IgA Conjugate	2 x 48	83-1012-01
EliA IgA Conjugate	6 x 48	83-1014-01
EliA IgM Calibrator Well	4 x 12	14-5527-01
EliA IgM Calibrators	1 curve	83-1049-01
EliA IgM Curve Control	6 runs	83-1050-01
EliA IgM Conjugate	2 x 48	83-1031-01
EliA IgM Conjugate	6 x 48	83-1048-01
EliA Calprotectin Calibrator Well	4 x 12	14-5618-01
EliA Calprotectin Calibrators	1 curve	83-1058-01
EliA Calprotectin Curve Control	6 runs	83-1059-01
EliA Calprotectin Conjugate	2 x 48	83-1060-01
EliA Calprotectin Conjugate	6 x 48	83-1061-01
EliA Stool Extraction Kit	50	14-5638-01
EliA Calprotectin Extraction Buffer	6 x 24	83-1068-01
Faecal sample preparation kit	50	14-5619-01
EliA Sample Diluent	6 x 30 Dilutions	83-1003-01
EliA Dummy Well	4 x 12	14-5510-01

Thyroglobulin IgG and Thyroid Peroxidase IgG

Thyroid autoimmunity comprises a number of distinct but pathogenically related immune disorders of the thyroid gland. The autoimmune response is dominated by anti-thyroid antibodies directed against the prohormone Thyroglobulin (TG) and Thyroid Peroxidase (TPO). ImmunoCAP Thyroglobulin and Thyroid Peroxidase quantitatively measures IgG antibodies specific for Thyroglobulin and Thyroid Peroxidase respectively in human serum or plasma. These tests can be used as an aid in the clinical diagnosis of certain thyroid diseases, such as autoimmune thyroiditis and Graves' disease.



Thyroid Diseases

Product	Size	Art. No.	Barcode
ImmunoCAP Thyroglobulin	3 x 16	14-4507-35	A7C
ImmunoCAP Thyroid Peroxidase	3 x 16	14-4508-35	A7D
Control			
ImmunoCAP Thyroglobulin IgG Antibodies Control NLH	3 x 2 x 0.5 ml	10-9413-01	
ImmunoCAP Thyroid Peroxidase IgG Antibodies Control NLH	3 x 2 x 0.5 ml	10-9414-01	

Method Specific Reagents for ImmunoCAP Tests (Phadia 250, Phadia 2500, Phadia 5000)

Product	Size	Art. No.
ImmunoCAP Specific IgG Conjugate 50	2 x 50	10-9318-01
ImmunoCAP Specific IgG Calibrator Strip	1 curve	10-9327-01
ImmunoCAP Specific IgG Curve Control Strip	3 pairs	10-9349-01
ImmunoCAP IgA/IgG Calibrator ImmunoCAP	1 x 16	14-4424-01
ImmunoCAP Autoimmunity Specific IgG Sample Diluent	6 x 50 ml	10-9435-01
System reagents, see page 45-46, 48		

Method Specific Reagents for ImmunoCAP Tests (Phadia 100)

Product	Size	Art. No.
ImmunoCAP Specific IgG Conjugate	2 x 48	10-9455-01
ImmunoCAP Specific IgG Calibrators	1 curve	10-9305-01
ImmunoCAP Specific IgG Curve Controls	3 pairs	10-9333-01
ImmunoCAP IgA/IgG Calibrator ImmunoCAP	1 x 16	14-4424-01
ImmunoCAP Autoimmunity Specific IgG Sample Diluent	6 x 10 ml	10-9499-01
System reagents, see page 49		

Gliadin IgA/IgG

ImmunoCAP Gliadin IgA/IgG quantitatively measures IgA and IgG antibodies specific for gliadin in human serum or plasma. Measurement of circulating anti-gliadin antibodies can be used as an aid in the clinical diagnosis of patients with celiac disease and dermatitis herpetiformis, in conjunction with other clinical findings.



Celiac Disease

Product	Code	Size	Art. No.	Barcode
ImmunoCAP Gliadin IgA/IgG	AGf98	3 x 16	14-4425-35	882
Control				
ImmunoCAP Gliadin IgA/IgG Control L		6 x 4 doses	10-9484-01	
ImmunoCAP Gliadin IgA Control H		6 x 4 doses	10-9485-01	
ImmunoCAP Gliadin IgG Control H		6 x 4 doses	10-9486-01	

Method Specific Reagents for ImmunoCAP Tests (Phadia 100)

Product	Size	Art. No.
ImmunoCAP Specific IgA Conjugate	48	10-9458-01
ImmunoCAP Specific IgA Calibrators	1 curve	10-9304-01
ImmunoCAP Specific IgA Curve Controls	3 pairs	10-9308-01
ImmunoCAP Specific IgG Conjugate	2 x 48	10-9455-01
ImmunoCAP Specific IgG Calibrators	1 curve	10-9305-01
ImmunoCAP Specific IgG Curve Controls	3 pairs	10-9333-01
ImmunoCAP IgA/IgG Calibrator ImmunoCAP	16	14-4424-01
ImmunoCAP Specific IgA/IgG Sample Diluent	6 x 10 ml	10-9498-01
System reagents, see page 49		



High productivity, automation and cost effectiveness

- Allergy and Autoimmunity testing in one run
- Throughput:
 - Phadia 5000: 960 ImmunoCAP results/hour
 - Phadia 5000E: 720 ImmunoCAP results/hour
150 EliA results/hour
 - Phadia 5000E+E: 480 ImmunoCAP results/hour
300 EliA results/hour
- Onboard dilutions (EliA)
- Continuous random access
- All reagents available onboard
- 28-day storage of calibrator curves
- Automatic start-up and shutdown function
- Remote diagnostics via Phadia LabCommunit
- Phadia Prime, Art. No. 12-4101-00

True accuracy, high precision and outstanding quality

- Excellent consistency over time and between countries, systems, laboratories and users
- An allergen panel detecting sensitization to more than 650 allergens including more than 100 allergen components
- An autoimmunity panel for evaluation of over 20 diseases
- One of the largest quality assessment programs in the world

Phadia 5000 – System reagents

Product	ImmunoCAP	EliA	Art. No.
	Size	Size	
Development Solution	6 x 2200	6 x > 1165	10-9314-01
Stop Solution	~ 4600	> 13100	34-2337-11
Washing Solution Concentrate	2800 ml	2800 ml	34-2337-21
Washing Solution Additive	4 x 850 ml	4 x 850 ml	10-9518-01
FluoroC	6 vials	6 vials	10-9264-01
Maintenance Solution Kit Large	1 procedure	1 procedure	10-9537-01

Phadia 5000 Instrument

Product	Size	Art. No.
Phadia 5000	1	12-4000-00
Phadia 5000E	1	12-4000-01
Phadia 5000E+E	1	12-4000-02

Phadia 5000 Accessories

Product	Size	Art. No.
Pipette Tips (5000), Phadia 1000	10 x 500	12-3805-03
Pipette Tips in Racks (3840), Phadia 1000	24 x 160	12-3805-04
Dilution well	50 x 18	12-4005-69
Maintenance Bottle, Diluent, Phadia 2500/5000	1	12-4005-70
Conjugate Storage Tray, Phadia 2500/5000	1	12-4005-71
Carrier Waste Container, Phadia 2500/5000	1	12-4005-72
Solid Waste Container, Phadia 2500/5000	1	12-4005-73
Carrier Waste Container Tray, Phadia 2500/5000	1	12-4005-74
Solid Waste Container Tray, Phadia 2500/5000	1	12-4005-75
Sample Rack, Phadia 2500/5000	10	12-4005-76
QC Rack, Fixed Position, Phadia 2500/5000	2	12-4005-77
Carrier Rack, Phadia 2500/5000	5	12-4005-78
Strip Rack, Phadia 2500/5000	4	12-4005-79
Pipette Tip Rack, Phadia 2500/5000	4	12-4005-80
Loading Tray, Phadia 2500/5000	1	12-4005-81
QC Rack, Phadia 2500/5000	4	12-4005-82
Cleaning Solution Tank, Phadia 2500/5000	1	12-4005-83

Please note that all products are not available in all countries. The article number's two digit suffix (-01) may vary between countries.



High productivity, automation and cost effectiveness

- Allergy and Autoimmunity testing in one run
- Throughput:
 - Phadia 2500: 480 ImmunoCAP results/hour
 - Phadia 2500E: 240 ImmunoCAP results/hour
 - Phadia 2500EE: 150 EliA results/hour
 - Phadia 2500EE: 300 EliA results/hour
- Onboard dilutions (EliA)
- Continuous random access
- All reagents available onboard
- 28-day storage of calibrator curves
- Automatic start-up and shutdown function
- Remote diagnostics via Phadia LabCommunity
- Phadia Prime, Art. No. 12-4101-00

True accuracy, high precision and outstanding quality

- Excellent consistency over time and between countries, systems, laboratories and users
- An allergen panel detecting sensitization to more than 650 allergens including more than 100 allergen components
- An autoimmunity panel for evaluation of over 20 diseases
- One of the largest quality assessment programs in the world

Phadia 2500 – System reagents

Product	ImmunoCAP	EliA	Art. No.
	Size	Size	
Development Solution	6 x 2200	6 x > 1165	10-9314-01
Stop Solution	~ 4600	> 13100	34-2337-11
Washing Solution Concentrate	2800 ml	2800 ml	34-2337-21
Washing Solution Additive	4 x 850 ml	4 x 850 ml	10-9518-01
FluoroC	6 vials	6 vials	10-9264-01
Maintenance Solution Kit Large	2 procedures	2 procedures	10-9537-01

Phadia 2500 Instrument

Product	Size	Art. No.
Phadia 2500	1	12-4100-00
Phadia 2500E	1	12-4100-01
Phadia 2500EE	1	12-4100-02

Phadia 2500 Accessories

Product	Size	Art. No.
Pipette Tips (5000), Phadia 1000	10 x 500	12-3805-03
Pipette Tips in Racks (3840), Phadia 1000	24 x 160	12-3805-04
Dilution well	50 x 18	12-4005-69
Maintenance Bottle, Diluent, Phadia 2500/5000	1	12-4005-70
Conjugate Storage Tray, Phadia 2500/5000	1	12-4005-71
Carrier Waste Container, Phadia 2500/5000	1	12-4005-72
Solid Waste Container, Phadia 2500/5000	1	12-4005-73
Carrier Waste Container Tray, Phadia 2500/5000	1	12-4005-74
Solid Waste Container Tray, Phadia 2500/5000	1	12-4005-75
Sample Rack, Phadia 2500/5000	10	12-4005-76
QC Rack, Fixed Position, Phadia 2500/5000	2	12-4005-77
Carrier Rack, Phadia 2500/5000	5	12-4005-78
Strip Rack, Phadia 2500/5000	4	12-4005-79
Pipette Tip Rack, Phadia 2500/5000	4	12-4005-80
Loading Tray, Phadia 2500/5000	1	12-4005-81
QC Rack, Phadia 2500/5000	4	12-4005-82
Cleaning Solution Tank, Phadia 2500/5000	1	12-4005-83

Please note that all products are not available in all countries. The article number's two digit suffix (-01) may vary between countries.



High productivity, automation and cost effectiveness

- Throughput: 240 results/hour
- Continuous random access
- All reagents available onboard
- 28-day storage of calibrations curves
- Automatic start-up and shutdown function
- Connectable to Laboratory Automation Systems
- Remote diagnostics via Phadia LabCommunity
- Phadia Prime, Art. No. 12-4101-00

True accuracy, high precision and outstanding quality

- Excellent consistency over time and between countries, systems, laboratories and users
- An allergen panel detecting sensitization to more than 650 allergens including more than 100 allergen components
- One of the largest quality assessment programs in the world

Phadia 1000 – System reagents

Product	Size	Art. No.
Development Solution	6 x ~1200	10-9439-01
Development Solution	6 x ~2200	10-9314-01
Stop Solution	~1200	34-2271-51
Washing Solution	2 x 5 l	10-9202-01
FluoroC	6 vials	10-9264-01
Maintenance Solution Kit	2 procedures	10-9476-01
Maintenance Solution Kit Large	8 procedures	10-9537-01

Phadia 1000 Instrument

Product	Size	Art. No.
Phadia 1000	1	12-3800-01

Phadia 1000 Accessories

Product	Size	Art. No.
Sample Rack, Phadia 1000	10	12-4805-02
Sample Rack Red, Phadia 1000	5	12-4807-37
Pipette Tips (5000), Phadia 1000	10 x 500	12-3805-03
Pipette Tips in Racks (3840), Phadia 1000	24 x 160	12-3805-04
Sample Rack Labels (1-100), Phadia 1000	100	12-4805-05
Sample Rack Holder, Phadia 1000	1	12-3807-41
Sample Rack, Narrow Tubes, Phadia 1000	5	12-4807-87
Covering, Solid Waste Container, Phadia 1000	25	12-3807-25
Rinse/Wash Bottle, Phadia 1000	1 x 5 l	12-4806-82
Waste Bottle, Phadia 1000	1 x 10 l	12-4806-83

Phadia® 250



High productivity, automation and cost effectiveness

- Throughput: 60 tests/hour
- ImmunoCAP and EliA tests in one run
- Onboard dilutions
- Continuous random access
- All reagents available onboard
- 28-day storage of calibrations curves
- Connectable to Laboratory Automation Systems
- Remote diagnostics via Phadia LabCommunity
- Phadia Prime, Art. No. 12-4101-00

True accuracy, high precision and outstanding quality

- Excellent consistency over time and between countries, systems, laboratories and users
- An allergen panel detecting sensitization to more than 650 allergens including more than 100 allergen components
- An autoimmunity panel for evaluation of over 20 diseases
- One of the largest quality assessment programs in the world

Phadia 250 – System reagents

Product	ImmunoCAP	EliA	Art. No.
	Size	Size	
Development Solution	6 x ~315	6 x >170	10-9440-01
Development Solution	6 x ~200	6 x >110	10-9441-01
Stop Solution	6 x ~185	6 x >560	10-9442-01
Stop Solution		6 x >292	10-9479-01
Washing Solution	2 x 5 l	2 x 5 l	10-9202-01
Washing Solution	6 x 1 l	6 x 1 l	10-9422-01
FluoroC	6 vials	6 vials	10-9264-01
Maintenance Solution Kit	3 procedures	3 procedures	10-9476-01
Maintenance Solution Kit Large	16 procedures	16 procedures	10-9537-01

Phadia 250 Instrument

Product	Size	Art. No.
Phadia 250	1	12-3900-01

Phadia 250 Accessories

Product	Size	Art. No.
Carrier Storage Tray, Phadia 250	1	12-4906-75
Conjugate Storage Insert, Phadia 250	1	12-4906-76
Development Storage Insert, Phadia 250	1	12-4906-77
Diluent Storage Insert, Phadia 250	1	12-4906-78
Carrier Loading Tray, Phadia 250	1	12-4906-79
Sample Rack, Phadia 250	5	12-4906-80
Sample Rack Holder, Phadia 250	1	12-3907-09
Elution Wells, Phadia 250	1 set	12-4906-81
Strip Storage Insert, Phadia 250	1	12-4906-82
Rack/Tray Bar Code Labels, Phadia 250	100	12-4906-83
Dilution Plate, Phadia 250	100	12-3907-08
Sample Rack Adapter, Phadia 250	5	12-4906-95
Sample Rack Adapter, Narrow Tubes, Phadia 250	10	12-4907-06
Wash Bottle, Phadia 250	1 x 10	12-4906-41
Rinse Bottle, Phadia 250	1 x 10	12-4906-44
Waste Bottle, Phadia 250	1 x 20	12-4906-45

Please note that all products are not available in all countries. The article number's two digit suffix (-01) may vary between countries.



High productivity, automation and cost effectiveness

- Throughput: 48 results in one assay
- Automated processing of both EliA and ImmunoCAP assays
- Onboard dilutions
- Run as stand-alone unit or in a cluster
- Batch processing
- 28-day storage of calibrations curves
- Remote diagnostics via Phadia LabCommunity

True accuracy, high precision and outstanding quality

- Excellent consistency over time and between countries, systems, laboratories and users
- An allergen panel detecting sensitization to more than 650 allergens including more than 100 allergen components
- An autoimmunity panel for evaluation of over 20 diseases
- One of the largest quality assessment programs in the world

Phadia 100 – System Reagents

Product	ImmunoCAP Size	EliA Size	Art. No.
Development Solution	6 x 100	6 x 48	10-9478-01
Stop Solution	6 x 100	6 x 240	10-9479-01
Washing Solution	2 x 5 l	2 x 5 l	10-9202-01
Washing Solution	6 x 1 l	6 x 1 l	10-9422-01
FluoroC	6 vials	6 vials	10-9264-01
Maintenance Solution Kit	10 procedures	10 procedures	10-9476-01

Phadia 100 Instrument

Product

Phadia 100 is phased out from production

Phadia 100 Accessories

Product	Size	Art. No.
Printer paper, Phadia 100	2 rolls	12-3501-05
Paper Holder Pin, Phadia 100	1	12-3500-93
Carrier Rack, Phadia 100	1	12-3250-01
Carrier Rack Stand, Phadia 100	1	12-3251-01
Communication Cable, Phadia 100	1	12-3500-94

ImmunoCAP – Specifications

Product	Measuring range	Calibrators
Total IgE	2 - 5000 kU/l	2, 10, 50, 200, 1000, 5000 kU/l
Total IgE Low Range	0-100 kU/l	0, 0.35, 0.7, 3.5, 17.5, 100 kU/l
Specific IgE	0 - 100 kU _A /l	0, 0.35, 0.7, 3.5, 17.5, 100 kU/l
Phadiatop / Phadiatop Infant	Positive/Negative or 0 - 100 PAU/l	0.35 kU/l or 0, 0.35, 0.7, 3.5, 17.5, 100 kU/l
Specific IgA	1.0 - 100 mg _A /l	0.01, 0.02, 0.04, 0.1, 0.3, 1.0 mg/l
Specific IgG	2.0 - 200 mg _A /l	0.02, 0.04, 0.1, 0.3, 1.0, 2.0 mg/l
Specific IgG4	0.07 - 30 mg _A /l	0, 3.0, 15, 35, 120, 300 µg/l
ECP	2 - 200 µg/l	2, 5, 15, 100, 200 µg/l
Tryptase	1 - 200 µg/l	1, 5, 12.5, 50, 200 µg/l
Thyroglobulin IgG (Phadia 100)	280 - 28000 IU/ml	0.02, 0.04, 0.1, 0.3, 1.0, 2.0 mg/l
Thyroid Peroxidase IgG (Phadia 100)	36 - 3600 IU/ml	0.02, 0.04, 0.1, 0.3, 1.0, 2.0 mg/l
Thyroglobulin IgG (Phadia 250)	244 - 24400 IU/ml	0.02, 0.04, 0.1, 0.3, 1.0, 2.0 mg/l
Thyroid Peroxidase IgG (Phadia 250)	33.4 - 3340 IU/ml	0.02, 0.04, 0.1, 0.3, 1.0, 2.0 mg/l
Gliadin IgA	1.0 - 100 mg _A /l	0.01, 0.02, 0.04, 0.1, 0.3, 1.0 mg/l
Gliadin IgG	2.0 - 200 mg _A /l	0.02, 0.04, 0.1, 0.3, 1.0, 2.0 mg/l

EliA – Specifications

Product	Measuring range	Calibrators
EliA IgG	0 - 600 µg/l	0, 4, 10, 20, 100, 600 µg/l
EliA IgA	0 - 80 µg/l	0, 0.3, 1.5, 5, 15, 80 µg/l
EliA IgM	0 - 1000 µg/l	0, 10, 35, 80, 500, 1000 µg/l
EliA Calprotectin	0 - 750 ng/ml	0, 3, 10, 20, 200, 750 ng/ml
EliA Calprotectin 2	0 - 750 ng/ml	0, 3, 10, 20, 200, 750 ng/ml
EliA anti-TSH-R	1.5 - 80 IU/l	0, 1.5, 3.5, 6.5, 12.5, 40 IU/l

thermoscientific.com/phadia

© 2017 Thermo Fisher Scientific Inc. All rights reserved. All trademarks are the property of Thermo Fisher Scientific Inc. and its subsidiaries.
Manufacturer; Phadia AB, Uppsala Sweden.

Head office Sweden +46 18 16 50 00
Austria +43 1 270 20 20
Belgium +32 2 749 55 15
Brazil +55 11 0800 55 15 355
China +86 21 6865 4588
Czech Republic +420 220 518 743
Denmark +45 70 23 33 06
Finland +358 10 3292 110
France +33 1 61 37 34 30

Germany +49 761 47 8050
Hong Kong +852 3107 7600
India +91 11 4610 7555/56
Italy +39 039 838 91
Japan +81 3 5826 1660
Korea +822 6196 5550
Norway +47 21 67 32 80
Portugal +351 21 423 5350
South Africa +27 11 792 6790

Spain +34 935 765 800
Sweden +46 18 16 60 60
Switzerland +41 43 343 40 50
Taiwan +886 2 8751 6655
The Netherlands +31 30 602 37 00
United Kingdom/Ireland +44 1 908 769 110
USA +1 800 346 4364
Other countries +46 18 16 50 00